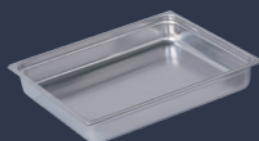


»»» ÍNDICE

RECIPIENTES GASTRONORM

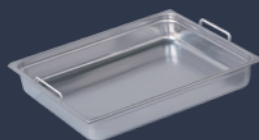
**CUBETAS GN
LISAS**

PÁG. 184



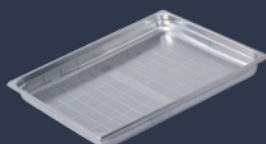
**CUBETAS GN
CON ASAS**

PÁG. 185



**CUBETAS GN
PERFORADAS**

PÁG. 186

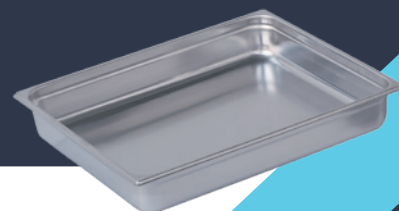


ESPECIALES


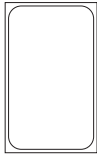
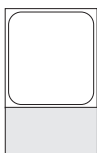
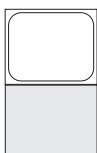
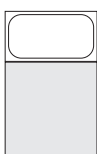
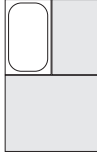
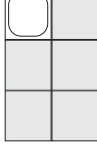
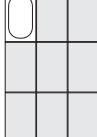
PÁG. 187



CUBETAS GASTRONORM LISAS

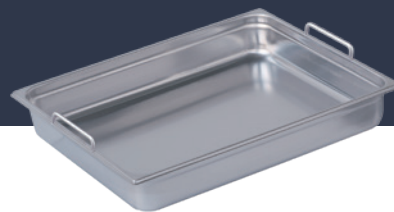


· Fabricadas en acero inoxidable AISI 304 18/10 de gran robustez y bordes reforzados.


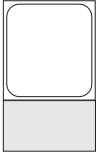
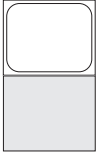
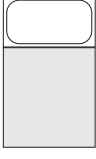
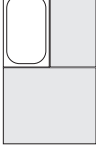
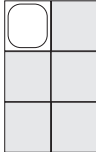
| Modelo | Medidas | Profundidad (mm) | Capacidad (litros) | Código | PVP (€) | | | | |
|------------|---|------------------|--------------------|---|------------|------------|------|------------|-----------|
| 2/1 |  | 650 x 530 | 200 | 52,00 | ● RGN21200 | 136 | | | |
| | | | 150 | 43,10 | ● RGN21150 | 106 | | | |
| | | | 100 | 28,90 | ● RGN21100 | 85 | | | |
| | | | 65 | 18,80 | ● RGN21060 | 69 | | | |
| | | | 40 | 11,50 | ● RGN21040 | 61 | | | |
| | | | 20 | 6,20 | ● RGN21020 | 56 | | | |
| 1/1 |  | 325x530 | 200 | 26,00 | ● RGN11200 | 69 | | | |
| | | | 150 | 20,20 | ● RGN11150 | 58 | | | |
| | | | 100 | 14,20 | ● RGN11100 | 44 | | | |
| | | | 65 | 8,30 | ● RGN11060 | 34 | | | |
| | | | 40 | 5,10 | ● RGN11040 | 29 | | | |
| | | | 20 | 2,80 | ● RGN11020 | 26 | | | |
| 2/3 |  | 325x352 | 200 | 18,30 | ● RGN23200 | 80 | | | |
| | | | 150 | 13,20 | ● RGN23150 | 60 | | | |
| | | | 100 | 8,80 | ● RGN23100 | 43 | | | |
| | | | 65 | 5,60 | ● RGN23065 | 35 | | | |
| | | | 40 | 3,10 | ● RGN23040 | 32 | | | |
| | | | 20 | 1,70 | ● RGN23020 | 23 | | | |
| 1/2 |  | 325x265 | 200 | 12,00 | ● RGN12200 | 49 | | | |
| | | | 150 | 9,10 | ● RGN12150 | 37 | | | |
| | | | 100 | 6,10 | ● RGN12100 | 32 | | | |
| | | | 65 | 4,10 | ● RGN12065 | 23 | | | |
| | | | 40 | 2,20 | ● RGN12040 | 21 | | | |
| | | | 20 | 1,20 | ● RGN12020 | 18 | | | |
| 1/3 |  | 325x176 | 200 | 7,30 | ● RGN13200 | 44 | | | |
| | | | 150 | 5,60 | ● RGN13150 | 39 | | | |
| | | | 100 | 3,80 | ● RGN13100 | 24 | | | |
| | | | 65 | 2,50 | ● RGN13065 | 20 | | | |
| | | | 40 | 1,50 | ● RGN13040 | 19 | | | |
| | | | 20 | 0,80 | ● RGN13020 | 18 | | | |
| 1/4 |  | 265x162 | 200 | 5,00 | ● RGN14200 | 42 | | | |
| | | | 150 | 4,10 | ● RGN14150 | 32 | | | |
| | | | 100 | 2,80 | ● RGN14100 | 22 | | | |
| | | | 65 | 1,70 | ● RGN14065 | 18 | | | |
| | | | 20 | 0,50 | ● RGN14020 | 14 | | | |
| | | | 1/6 |  | 176x162 | 200 | 2,90 | ● RGN16200 | 37 |
| 150 | 2,20 | ● RGN16150 | | | | 29 | | | |
| 100 | 1,60 | ● RGN16100 | | | | 20 | | | |
| 65 | 1,00 | ● RGN16065 | | | | 18 | | | |
| 1/9 |  | 170x108 | | | | 100 | 0,80 | ● RGN19100 | 19 |
| | | | | | | 65 | 0,60 | ● RGN19065 | 12 |



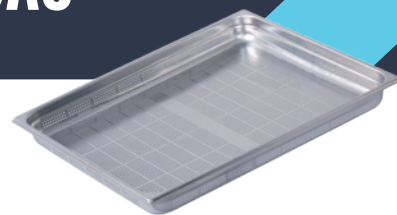
CUBETAS GASTRONORM CON ASAS VERTICALES MÓVILES



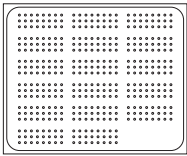
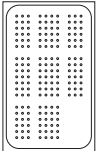
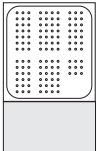
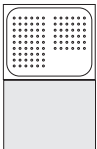
- Fabricadas en acero inoxidable AISI 304 18/10 de gran robustez y bordes reforzados.
- Las asas retráctiles facilitan la manipulación y el apilado de los recipientes.

| Modelo | Medidas | Profundidad (mm) | Capacidad (litros) | Código | PVP (€) |
|--|-----------|------------------|--------------------|------------|------------|
| 2/1  | 650 x 530 | 200 | 52,00 | ● RGN2120A | 145 |
| | | 150 | 43,10 | ● RGN2115A | 117 |
| | | 100 | 28,90 | ● RGN2110A | 96 |
| | | 65 | 18,80 | ● RGN2106A | 80 |
| | | 40 | 11,50 | ● RGN2104A | 71 |
| 1/1  | 325x530 | 200 | 26,00 | ● RGN1120A | 79 |
| | | 150 | 20,20 | ● RGN1115A | 67 |
| | | 100 | 14,20 | ● RGN1110A | 54 |
| | | 65 | 8,30 | ● RGN1106A | 43 |
| | | 40 | 5,10 | ● RGN1104A | 39 |
| 2/3  | 325x352 | 200 | 18,30 | ● RGN2320A | 88 |
| | | 150 | 13,20 | ● RGN2315A | 69 |
| | | 100 | 8,80 | ● RGN2310A | 53 |
| | | 65 | 5,60 | ● RGN2306A | 44 |
| | | 40 | 3,10 | ● RGN2304A | 41 |
| 1/2  | 325x265 | 200 | 12,00 | ● RGN1220A | 59 |
| | | 150 | 9,10 | ● RGN1215A | 47 |
| | | 100 | 6,10 | ● RGN1210A | 41 |
| | | 65 | 4,10 | ● RGN1206A | 33 |
| | | 40 | 2,20 | ● RGN1204A | 29 |
| 1/3  | 325x176 | 200 | 7,30 | ● RGN1320A | 54 |
| | | 150 | 5,60 | ● RGN1315A | 47 |
| | | 100 | 3,80 | ● RGN1310A | 34 |
| | | 65 | 2,50 | ● RGN1306A | 27 |
| | | 40 | 1,50 | ● RGN1304A | 26 |
| 1/4  | 265x162 | 200 | 5,00 | ● RGN1420A | 49 |
| | | 150 | 4,10 | ● RGN1415A | 41 |
| | | 100 | 2,80 | ● RGN1410A | 32 |
| | | 65 | 1,70 | ● RGN1406A | 25 |
| 1/6  | 176x162 | 200 | 2,90 | ● RGN1620A | 46 |
| | | 150 | 2,20 | ● RGN1615A | 39 |
| | | 100 | 1,60 | ● RGN1610A | 29 |
| | | 65 | 1,00 | ● RGN1606A | 25 |

CUBETAS GASTRONORM PERFORADAS



- Fabricadas en acero inoxidable AISI 304 18/10 de gran robustez y bordes reforzados.
- Las cubetas Gastronorm perforadas facilitan el escurrido de los alimentos.

| Modelo | Medidas | Profundidad (mm) | Capacidad (litros) | Código | PVP (€) | |
|------------|---|------------------|--------------------|--------|------------|------------|
| 2/1 |  | 650 x 530 | 200 | 52,00 | ● RGN2120F | 206 |
| | | | 150 | 43,10 | ● RGN2115F | 169 |
| | | | 100 | 28,90 | ● RGN2110F | 120 |
| | | | 65 | 18,80 | ● RGN2106F | 97 |
| | | | 40 | 11,50 | ● RGN2104F | 77 |
| | | | 20 | 6,20 | ● RGN2102F | 73 |
| 1/1 |  | 325x530 | 200 | 26,00 | ● RGN1120F | 125 |
| | | | 150 | 20,20 | ● RGN1115F | 108 |
| | | | 100 | 14,20 | ● RGN1110F | 73 |
| | | | 65 | 8,30 | ● RGN1106F | 56 |
| | | | 40 | 5,10 | ● RGN1104F | 48 |
| | | | 20 | 2,80 | ● RGN1102F | 45 |
| 2/3 |  | 325x352 | 200 | 18,30 | ● RGN2320F | 96 |
| | | | 150 | 13,20 | ● RGN2315F | 88 |
| | | | 100 | 8,80 | ● RGN2310F | 67 |
| | | | 65 | 5,60 | ● RGN2306F | 46 |
| | | | 40 | 3,10 | ● RGN2304F | 38 |
| | | | 20 | 1,70 | ● RGN2302F | 35 |
| 1/2 |  | 325x265 | 200 | 12,00 | ● RGN1220F | 99 |
| | | | 150 | 9,10 | ● RGN1215F | 68 |
| | | | 100 | 6,10 | ● RGN1210F | 49 |
| | | | 65 | 4,10 | ● RGN1206F | 42 |

FONDO PERFORADO

Para separar o escurrir los alimentos del fondo de la cubeta.

| Para cubeta | Código | PVP (€) |
|-------------|------------|------------|
| GN 2/1 | ● RFOND21A | 112 |
| GN 1/1 | ● RFOND11A | 56 |
| GN 2/3 | ● RFOND23A | 48 |
| GN 1/2 | ● RFOND12A | 37 |
| GN 1/3 | ● RFOND13A | 27 |
| GN 1/4 | ● RFOND14A | 23 |



PERFILES DIVISORIOS

Para dividir las cubetas Gastronorm y aprovechar su superficie.

| Modelo | Medidas (mm) | Código | PVP (€) |
|--------|--------------|------------|-----------|
| 2/1 | 530 | • F1120602 | 23 |
| 1/1 | 325 | • F1120601 | 20 |



TAPAS GASTRONORM

· Rango de temperatura de trabajo: de -40°C a +110°C.

TAPA

| Modelo | Código | PVP (€) |
|--------|------------|-----------|
| 1/1 | • RTAPA110 | 32 |
| 2/3 | • RTAPA230 | 26 |
| 1/2 | • RTAPA120 | 19 |
| 1/3 | • RTAPA130 | 16 |
| 1/4 | • RTAPA140 | 14 |
| 1/6 | • RTAPA160 | 9 |
| 1/9 | • RTAPA190 | 8 |



TAPA CON ORIFICIOS PARA ASAS

| Modelo | Código | PVP (€) |
|--------|------------|-----------|
| 1/1 | • RTAPA11A | 41 |
| 2/3 | • RTAPA23A | 23 |
| 1/2 | • RTAPA12A | 21 |
| 1/3 | • RTAPA13A | 16 |
| 1/4 | • RTAPA14A | 14 |
| 1/6 | • RTAPA16A | 12 |



TAPA HERMÉTICA CON SILICONA

| Modelo | Código | PVP (€) |
|--------|------------|------------|
| 1/1 | • RTAPA11S | 103 |
| 1/2 | • RTAPA12S | 77 |
| 1/3 | • RTAPA13S | 62 |
| 1/4 | • RTAPA14S | 57 |
| 1/6 | • RTAPA16S | 57 |



Detalle silicona

PARRILLA GASTRONORM

· Fabricada en acero inoxidable

| Modelo | Medidas (mm) | Código | PVP (€) |
|--------|--------------|------------|-----------|
| 2/1 | 645 x 530 | • RPARGN21 | 49 |
| 1/1 | 530 x 325 | • RPARGN11 | 26 |
| 2/3 | 352 x 325 | • RPARGN23 | 26 |

