

»»» ÍNDICE

ESTANTERÍAS

ESTANTERÍAS DE PARED

PÁG. 130



ESTANTERÍAS DE PERFIL RANURADO

PÁG. 135



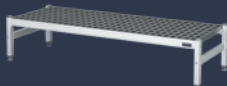
ESTANTERÍAS DE PIE INOXIDABLES

PÁG. 142



ESTANTERÍAS DE PIE DE ALUMINIO

PÁG. 152





ESTANTERÍA DE PARED SOLDADA

- Fabricada en acero inoxidable AISI 304 18/10.
- Cartelas a pared con taladros de Ø 8 mm.
- Tacos para su instalación incluidos.
- **Se suministra totalmente soldada.**



POSIBILIDAD DE CUSTOMIZAR EN LONGITUD

Indicar medida de longitud deseada, precio y código del modelo inmediatamente superior (*)

| Medidas totales (mm) | Código | PVP (€) |
|----------------------|------------|------------|
| 600 x 250 x 150 | • F0100207 | 126 |
| 800 x 250 x 150 | • F0100208 | 130 |
| 1000 x 250 x 150 | • F0100201 | 146 |
| 1200 x 250 x 150 | • F0100202 | 162 |
| 1400 x 250 x 150 | • F0100203 | 177 |
| 1500 x 250 x 150 | • F0100209 | 182 |
| 1600 x 250 x 150 | • F0100204 | 184 |
| 1800 x 250 x 150 | • F0100205 | 213 |
| 2000 x 250 x 150 | • F0100206 | 239 |

| Medidas totales (mm) | Código | PVP (€) |
|----------------------|------------|------------|
| 600 x 300 x 250 | • F0100226 | 143 |
| 800 x 300 x 250 | • F0100227 | 148 |
| 1000 x 300 x 250 | • F0100228 | 162 |
| 1200 x 300 x 250 | • F0100229 | 179 |
| 1400 x 300 x 250 | • F0100230 | 195 |
| 1500 x 300 x 250 | • F0100231 | 204 |
| 1600 x 300 x 250 | • F0100232 | 211 |
| 1800 x 300 x 250 | • F0100233 | 236 |
| 2000 x 300 x 250 | • F0100234 | 261 |

| Medidas totales (mm) | Código | PVP (€) |
|----------------------|------------|------------|
| 600 x 400 x 250 | • F0100217 | 158 |
| 800 x 400 x 250 | • F0100218 | 163 |
| 1000 x 400 x 250 | • F0100211 | 177 |
| 1200 x 400 x 250 | • F0100212 | 195 |
| 1400 x 400 x 250 | • F0100213 | 215 |
| 1500 x 400 x 250 | • F0100219 | 225 |
| 1600 x 400 x 250 | • F0100214 | 236 |
| 1800 x 400 x 250 | • F0100215 | 259 |
| 2000 x 400 x 250 | • F0100216 | 286 |



ESTANTERÍA ESCURREPLATOS MURAL

- Fabricada en acero inoxidable AISI 304 18/10.
- Cartelas a pared con taladros de Ø 8 mm.
- Tacos y tornillos para su instalación incluidos.
- Parrillas en acero inoxidable desmontables.
- Para platos con diámetro máximo de 250 mm.
- **Se suministra totalmente soldada.**



| Medidas totales (mm) | Capacidad platos | Código | PVP (€) |
|----------------------|------------------|------------|------------|
| 730 x 300 x 180 | 26 | • F0200301 | 296 |
| 1430 x 300 x 180 | 52 | • F0200302 | 405 |

ESTANTERÍA CAMPANA MURAL

- Fabricada en acero inoxidable AISI 304 18/10.
- Cartelas a pared con taladros de Ø 8 mm.
- Tacos y tornillos para su instalación, incluidos.
- Parrillas en acero inoxidable desmontables GN 1/1.
- **Se suministra totalmente soldada.**



| Medidas totales (mm) | Capacidad | Código | PVP (€) |
|----------------------|-----------|------------|------------|
| 590 x 400 x 180 | 1GN 1/1 | • F0200104 | 326 |
| 1115 x 400 x 180 | 2GN 1/1 | • F0200101 | 403 |
| 1650 x 400 x 180 | 3GN 1/1 | • F0200102 | 465 |
| 2180 x 400 x 180 | 4GN 1/1 | • F0200103 | 525 |



ESTANTERÍA PARA MICROONDAS

- Diseñada para colgar a la pared el microondas u otros aparatos.
- Fabricada en acero inoxidable.
- Cartelas a pared con taladros de Ø 8 mm.
- Tacos y tornillos para su instalación, incluidos.
- Orificio para cableado de Ø 60 mm.
- **Se suministra totalmente soldada con cartelas desmontadas.**

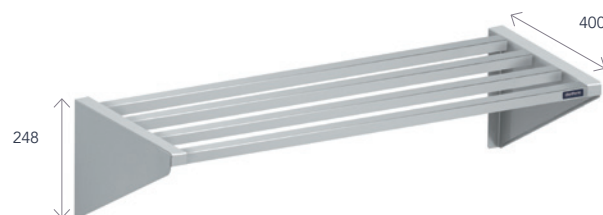


| Medidas totales (mm) | Código | PVP (€) |
|----------------------|------------|------------|
| 600 x 400 x 230 | • F0200401 | 216 |
| 700 x 500 x 280 | • F0200403 | 238 |
| 800 x 400 x 230 | • F0200402 | 227 |



ESTANTERÍA DE TUBOS MURAL

- Fabricada en acero inoxidable AISI 304 18/10.
- Cartelas de acero inoxidable satinado a pared con taladros de Ø 8 mm.
- Tacos y tornillos para su instalación incluidos.
- Tubos de 25 x 25 mm de acero inoxidable.
- **Se suministra totalmente soldada.**



| Medidas totales (mm) | Código | PVP (€) |
|----------------------|--------------|------------|
| 600 x 400 x 248 | • F0100007 | 193 |
| 800 x 400 x 248 | • F0100008 | 210 |
| 1000 x 400 x 248 | • F0100001 | 231 |
| 1200 x 400 x 248 | • F0100002 | 239 |
| 1400 x 400 x 248 | • F0100003 | 258 |
| 1600 x 400 x 248 | • F0100004 | 274 |
| 1800 x 400 x 248 | • F0100006 * | 335 |
| 2000 x 400 x 248 | • F0100005 * | 352 |

* Modelos que disponen de una cartela central soldada.



POSIBILIDAD DE CUSTOMIZAR EN LONGITUD

Indicar medida de longitud deseada, precio y código del modelo inmediatamente superior (*)



• 24/48 HORAS EXPEDICIÓN • 3 DÍAS EXPEDICIÓN



ESTANTERÍA CON CARTELAS

- Estantería fabricada en acero inoxidable.
- Tacos y tornillos para su instalación incluidos.
- Se suministra desmontada.
- **Fácil montaje en 3 minutos.**



POSIBILIDAD DE CUSTOMIZAR EN LONGITUD

Indicar medida de longitud deseada, precio y código del modelo inmediatamente superior (*)

| Medidas totales (mm) | Código | PVP (€) |
|----------------------|------------|------------|
| 600 x 250 x 150 | • F0100235 | 99 |
| 800 x 250 x 150 | • F0100236 | 104 |
| 1000 x 250 x 150 | • F0100237 | 116 |
| 1200 x 250 x 150 | • F0100238 | 129 |
| 1400 x 250 x 150 | • F0100239 | 143 |
| 1500 x 250 x 150 | • F0100240 | 146 |
| 1600 x 250 x 150 | • F0100241 | 148 |
| 1800 x 250 x 150 | • F0100242 | 169 |
| 2000 x 250 x 150 | • F0100243 | 191 |

| Medidas totales (mm) | Código | PVP (€) |
|----------------------|------------|------------|
| 600 x 300 x 200 | • F0100221 | 106 |
| 800 x 300 x 200 | • F0100222 | 110 |
| 1000 x 300 x 200 | • F0100223 | 123 |
| 1200 x 300 x 200 | • F0100224 | 138 |
| 1400 x 300 x 200 | • F0100225 | 149 |
| 1500 x 300 x 200 | • F0100253 | 152 |
| 1600 x 300 x 200 | • F0100254 | 158 |
| 1800 x 300 x 200 | • F0100255 | 177 |
| 2000 x 300 x 200 | • F0100256 | 195 |

| Medidas totales (mm) | Código | PVP (€) |
|----------------------|------------|------------|
| 600 x 400 x 250 | • F0100244 | 116 |
| 800 x 400 x 250 | • F0100245 | 120 |
| 1000 x 400 x 250 | • F0100246 | 132 |
| 1200 x 400 x 250 | • F0100247 | 146 |
| 1400 x 400 x 250 | • F0100248 | 159 |
| 1500 x 400 x 250 | • F0100249 | 167 |
| 1600 x 400 x 250 | • F0100250 | 175 |
| 1800 x 400 x 250 | • F0100251 | 191 |
| 2000 x 400 x 250 | • F0100252 | 212 |





ESTANTERÍA CON CARTELAS INVERTIDAS

- Estantería fabricada en acero inoxidable.
- Tacos y tornillos para su instalación incluidos.
- Se suministra desmontada.
- **Fácil montaje en 3 minutos.**



POSIBILIDAD DE CUSTOMIZAR EN LONGITUD

Indicar medida de longitud deseada, precio y código del modelo inmediatamente superior (*)

| Medidas totales (mm) | Código | PVP (€) |
|----------------------|------------|------------|
| 600 x 250 x 150 | • F0100600 | 99 |
| 800 x 250 x 150 | • F0100601 | 104 |
| 1000 x 250 x 150 | • F0100602 | 116 |
| 1200 x 250 x 150 | • F0100603 | 129 |
| 1400 x 250 x 150 | • F0100604 | 143 |
| 1500 x 250 x 150 | • F0100605 | 146 |
| 1600 x 250 x 150 | • F0100606 | 148 |
| 1800 x 250 x 150 | • F0100607 | 169 |
| 2000 x 250 x 150 | • F0100608 | 191 |

| Medidas totales (mm) | Código | PVP (€) |
|----------------------|------------|------------|
| 600 x 300 x 200 | • F0100609 | 106 |
| 800 x 300 x 200 | • F0100610 | 110 |
| 1000 x 300 x 200 | • F0100611 | 123 |
| 1200 x 300 x 200 | • F0100612 | 138 |
| 1400 x 300 x 200 | • F0100613 | 149 |
| 1500 x 300 x 200 | • F0100614 | 152 |
| 1600 x 300 x 200 | • F0100615 | 158 |
| 1800 x 300 x 200 | • F0100616 | 177 |
| 2000 x 300 x 200 | • F0100617 | 195 |

| Medidas totales (mm) | Código | PVP (€) |
|----------------------|------------|------------|
| 600 x 400 x 250 | • F0100618 | 116 |
| 800 x 400 x 250 | • F0100619 | 120 |
| 1000 x 400 x 250 | • F0100620 | 132 |
| 1200 x 400 x 250 | • F0100621 | 146 |
| 1400 x 400 x 250 | • F0100622 | 159 |
| 1500 x 400 x 250 | • F0100623 | 167 |
| 1600 x 400 x 250 | • F0100624 | 175 |
| 1800 x 400 x 250 | • F0100625 | 191 |
| 2000 x 400 x 250 | • F0100626 | 212 |



• 24/48 HORAS EXPEDICIÓN • 3 DÍAS EXPEDICIÓN

ESTANTERÍAS DE PARED

ESTANTERÍA DE PARED REGULABLE

- Fabricada íntegramente en acero inoxidable AISI 304 18/10 con acabado satinado.
- Fácil instalación de los montantes.
- Tacos y tornillos para su instalación incluidos.



MONTANTE

| Altura (mm) | Código | PVP (€) |
|-------------|------------|---------|
| 600 | • F0120001 | 33 |
| 1000 | • F0120002 | 40 |
| 1500 | • F0120003 | 53 |

- Precio por unidad.



ESTANTE LISO

| Medidas (mm) | Código | PVP (€) |
|--------------|------------|---------|
| 1000 x 250 | • F0100401 | 99 |
| 1200 x 250 | • F0100403 | 126 |
| 1400 x 250 | • F0100402 | 136 |
| 1600 x 250 | • F0100404 | 178 |
| 1000 x 400 | • F0100411 | 140 |
| 1200 x 400 | • F0100413 | 174 |
| 1400 x 400 | • F0100412 | 194 |
| 1600 x 400 | • F0100414 | 254 |



ESTANTE INCLINADO

| Medidas (mm) | Unidades | Cubetas | Código | PVP (€) |
|--------------|----------|---------|------------|---------|
| 1000 x 250 | 4 | 1/6 | • F0100501 | 118 |
| 1000 x 400 | 4 | 1/3 | • F0100511 | 168 |

- Cubetas no incluidas.



PRODUCTOS RELACIONADOS

RECIPIENTES GASTRONORM pág. 183

BARRA PARA COLGAR A LA PARED

- Fabricada en tubo de Ø 30 mm de acero inoxidable AISI 304 18/10.
- Pletinas soldadas con orificios para su sujeción a pared.
- Tacos y tornillos para su instalación incluidos.
- Se suministra totalmente soldada.

| Medidas totales (mm) | Código | PVP (€) |
|----------------------|------------|---------|
| 1000 x 150 | • F0210001 | 133 |
| 1500 x 150 | • F0210002 | 158 |
| 2000 x 150 | • F0210003 | 183 |



ESTANTERÍAS DE PERFIL RANURADO



ESTANTERÍAS DE PERFIL RANURADO

Diseños en 4, 5 y 6 niveles con opción de añadir estantes adicionales

Dos espesores: 1 mm o 1,5 mm

Estantería robusta, capaz de soportar hasta 350 kg*

* Estante de 800 x 300 de 1,5 mm de espesor con omegas de refuerzo

ESTANTERÍA DE PERFIL RANURADO DE 1 MM O 1,5 MM DE ESPESOR

- Fabricada en acero inoxidable AISI 304 18/10.
- Altura de los estantes regulable cada 150 mm.
- Profundidades de estantes disponibles: 300, 400, 500 y 600 mm.
- Alturas de caballetes disponibles: 1700 y 2000 mm.
- Fijación de los estantes a los caballetes mediante tornillería incluida.
- **Se suministra desmontada.**



ESTANTERÍAS DE PERFIL RANURADO DE 1MM DE ESPESOR



SIN OMEGAS DE REFUERZO

| Medidas totales (mm) | Carga total (Kg) | 4 Niveles | PVP (€) | 5 Niveles | PVP (€) | 6 Niveles | PVP (€) |
|----------------------|------------------|------------|---------|------------|---------|------------|---------|
| 800 x 300 x 1700 | 230 | • EPI00001 | 395 | • EPI00033 | 451 | • EPI00065 | 507 |
| 1000 x 300 x 1700 | 180 | • EPI00002 | 435 | • EPI00034 | 500 | • EPI00066 | 564 |
| 1200 x 300 x 1700 | 130 | • EPI00003 | 475 | • EPI00035 | 549 | • EPI00067 | 624 |
| 1400 x 300 x 1700 | 105 | • EPI00004 | 513 | • EPI00036 | 598 | • EPI00068 | 682 |
| 800 x 300 x 2000 | 230 | • EPI00005 | 414 | • EPI00037 | 468 | • EPI00069 | 522 |
| 1000 x 300 x 2000 | 180 | • EPI00006 | 453 | • EPI00038 | 517 | • EPI00070 | 581 |
| 1200 x 300 x 2000 | 130 | • EPI00007 | 492 | • EPI00039 | 566 | • EPI00071 | 642 |
| 1400 x 300 x 2000 | 105 | • EPI00008 | 531 | • EPI00040 | 615 | • EPI00072 | 700 |
| 800 x 400 x 1700 | 205 | • EPI00009 | 435 | • EPI00041 | 500 | • EPI00073 | 564 |
| 1000 x 400 x 1700 | 155 | • EPI00010 | 475 | • EPI00042 | 549 | • EPI00074 | 624 |
| 1200 x 400 x 1700 | 105 | • EPI00011 | 513 | • EPI00043 | 598 | • EPI00075 | 682 |
| 1400 x 400 x 1700 | 80 | • EPI00012 | 555 | • EPI00044 | 647 | • EPI00076 | 741 |
| 800 x 400 x 2000 | 205 | • EPI00013 | 453 | • EPI00045 | 517 | • EPI00077 | 581 |
| 1000 x 400 x 2000 | 155 | • EPI00014 | 492 | • EPI00046 | 566 | • EPI00078 | 642 |
| 1200 x 400 x 2000 | 105 | • EPI00015 | 531 | • EPI00047 | 615 | • EPI00079 | 700 |
| 1400 x 400 x 2000 | 80 | • EPI00016 | 571 | • EPI00048 | 664 | • EPI00080 | 757 |
| 800 x 500 x 1700 | 200 | • EPI00017 | 497 | • EPI00049 | 576 | • EPI00081 | 656 |
| 1000 x 500 x 1700 | 150 | • EPI00018 | 536 | • EPI00050 | 626 | • EPI00082 | 714 |
| 1200 x 500 x 1700 | 100 | • EPI00019 | 575 | • EPI00051 | 674 | • EPI00083 | 773 |
| 1400 x 500 x 1700 | 75 | • EPI00020 | 615 | • EPI00052 | 723 | • EPI00084 | 831 |
| 800 x 500 x 2000 | 200 | • EPI00021 | 513 | • EPI00053 | 594 | • EPI00085 | 672 |
| 1000 x 500 x 2000 | 150 | • EPI00022 | 555 | • EPI00054 | 643 | • EPI00086 | 732 |
| 1200 x 500 x 2000 | 100 | • EPI00023 | 593 | • EPI00055 | 692 | • EPI00087 | 791 |
| 1400 x 500 x 2000 | 75 | • EPI00024 | 632 | • EPI00056 | 741 | • EPI00088 | 850 |
| 800 x 600 x 1700 | 180 | • EPI00025 | 536 | • EPI00057 | 626 | • EPI00089 | 714 |
| 1000 x 600 x 1700 | 130 | • EPI00026 | 575 | • EPI00058 | 674 | • EPI00090 | 773 |
| 1200 x 600 x 1700 | 80 | • EPI00027 | 615 | • EPI00059 | 723 | • EPI00091 | 831 |
| 1400 x 600 x 1700 | 55 | • EPI00028 | 653 | • EPI00060 | 772 | • EPI00092 | 890 |
| 800 x 600 x 2000 | 180 | • EPI00029 | 555 | • EPI00061 | 643 | • EPI00093 | 732 |
| 1000 x 600 x 2000 | 130 | • EPI00030 | 593 | • EPI00062 | 692 | • EPI00094 | 791 |
| 1200 x 600 x 2000 | 80 | • EPI00031 | 632 | • EPI00063 | 741 | • EPI00095 | 850 |
| 1400 x 600 x 2000 | 55 | • EPI00032 | 671 | • EPI00064 | 790 | • EPI00096 | 908 |





CON OMEGAS DE REFUERZO

| Medidas totales (mm) | Carga total (Kg) | 4 Niveles | PVP (€) | 5 Niveles | PVP (€) | 6 Niveles | PVP (€) |
|----------------------|------------------|------------|------------|------------|------------|------------|--------------|
| 800 x 300 x 1700 | 280 | • EPI00097 | 456 | • EPI00129 | 528 | • EPI00161 | 597 |
| 1000 x 300 x 1700 | 230 | • EPI00098 | 518 | • EPI00130 | 603 | • EPI00162 | 687 |
| 1200 x 300 x 1700 | 180 | • EPI00099 | 579 | • EPI00131 | 680 | • EPI00163 | 780 |
| 1400 x 300 x 1700 | 155 | • EPI00100 | 642 | • EPI00132 | 755 | • EPI00164 | 871 |
| 800 x 300 x 2000 | 280 | • EPI00101 | 475 | • EPI00133 | 545 | • EPI00165 | 615 |
| 1000 x 300 x 2000 | 230 | • EPI00102 | 536 | • EPI00134 | 621 | • EPI00166 | 706 |
| 1200 x 300 x 2000 | 180 | • EPI00103 | 597 | • EPI00135 | 698 | • EPI00167 | 797 |
| 1400 x 300 x 2000 | 155 | • EPI00104 | 658 | • EPI00136 | 773 | • EPI00168 | 887 |
| 800 x 400 x 1700 | 255 | • EPI00105 | 497 | • EPI00137 | 576 | • EPI00169 | 656 |
| 1000 x 400 x 1700 | 205 | • EPI00106 | 558 | • EPI00138 | 652 | • EPI00170 | 747 |
| 1200 x 400 x 1700 | 155 | • EPI00107 | 619 | • EPI00139 | 729 | • EPI00171 | 839 |
| 1400 x 400 x 1700 | 130 | • EPI00108 | 680 | • EPI00140 | 805 | • EPI00172 | 931 |
| 800 x 400 x 2000 | 255 | • EPI00109 | 513 | • EPI00141 | 594 | • EPI00173 | 672 |
| 1000 x 400 x 2000 | 205 | • EPI00110 | 575 | • EPI00142 | 669 | • EPI00174 | 765 |
| 1200 x 400 x 2000 | 155 | • EPI00111 | 636 | • EPI00143 | 745 | • EPI00175 | 856 |
| 1400 x 400 x 2000 | 130 | • EPI00112 | 698 | • EPI00144 | 821 | • EPI00176 | 947 |
| 800 x 500 x 1700 | 250 | • EPI00113 | 558 | • EPI00145 | 652 | • EPI00177 | 747 |
| 1000 x 500 x 1700 | 200 | • EPI00114 | 619 | • EPI00146 | 729 | • EPI00178 | 839 |
| 1200 x 500 x 1700 | 150 | • EPI00115 | 680 | • EPI00147 | 805 | • EPI00179 | 931 |
| 1400 x 500 x 1700 | 125 | • EPI00116 | 741 | • EPI00148 | 881 | • EPI00180 | 1.022 |
| 800 x 500 x 2000 | 250 | • EPI00117 | 575 | • EPI00149 | 669 | • EPI00181 | 765 |
| 1000 x 500 x 2000 | 200 | • EPI00118 | 636 | • EPI00150 | 745 | • EPI00182 | 856 |
| 1200 x 500 x 2000 | 150 | • EPI00119 | 698 | • EPI00151 | 821 | • EPI00183 | 947 |
| 1400 x 500 x 2000 | 125 | • EPI00120 | 757 | • EPI00152 | 898 | • EPI00184 | 1.039 |
| 800 x 600 x 1700 | 230 | • EPI00121 | 597 | • EPI00153 | 702 | • EPI00185 | 806 |
| 1000 x 600 x 1700 | 180 | • EPI00122 | 658 | • EPI00154 | 778 | • EPI00186 | 898 |
| 1200 x 600 x 1700 | 130 | • EPI00123 | 719 | • EPI00155 | 854 | • EPI00187 | 989 |
| 1400 x 600 x 1700 | 105 | • EPI00124 | 780 | • EPI00156 | 931 | • EPI00188 | 1.080 |
| 800 x 600 x 2000 | 230 | • EPI00125 | 615 | • EPI00157 | 719 | • EPI00189 | 822 |
| 1000 x 600 x 2000 | 180 | • EPI00126 | 675 | • EPI00158 | 796 | • EPI00190 | 915 |
| 1200 x 600 x 2000 | 130 | • EPI00127 | 735 | • EPI00159 | 871 | • EPI00191 | 1.006 |
| 1400 x 600 x 2000 | 105 | • EPI00128 | 797 | • EPI00160 | 947 | • EPI00192 | 1.097 |



ESTANTERÍAS DE PERFIL RANURADO DE 1,5MM DE ESPESOR



SIN OMEGAS DE REFUERZO

| Medidas totales (mm) | Carga total (Kg) | 4 Niveles | PVP (€) | 5 Niveles | PVP (€) | 6 Niveles | PVP (€) |
|----------------------|------------------|------------|---------|------------|---------|------------|---------|
| 800 x 300 x 1700 | 300 | • EPI00193 | 484 | • EPI00225 | 560 | • EPI00257 | 636 |
| 1000 x 300 x 1700 | 250 | • EPI00194 | 522 | • EPI00226 | 608 | • EPI00258 | 695 |
| 1200 x 300 x 1700 | 150 | • EPI00195 | 562 | • EPI00227 | 658 | • EPI00259 | 753 |
| 1400 x 300 x 1700 | 125 | • EPI00196 | 600 | • EPI00228 | 707 | • EPI00260 | 813 |
| 800 x 300 x 2000 | 300 | • EPI00197 | 501 | • EPI00229 | 577 | • EPI00261 | 653 |
| 1000 x 300 x 2000 | 250 | • EPI00198 | 540 | • EPI00230 | 626 | • EPI00262 | 712 |
| 1200 x 300 x 2000 | 150 | • EPI00199 | 579 | • EPI00231 | 675 | • EPI00263 | 771 |
| 1400 x 300 x 2000 | 125 | • EPI00200 | 619 | • EPI00232 | 725 | • EPI00264 | 830 |
| 800 x 400 x 1700 | 275 | • EPI00201 | 522 | • EPI00233 | 608 | • EPI00265 | 695 |
| 1000 x 400 x 1700 | 225 | • EPI00202 | 562 | • EPI00234 | 658 | • EPI00266 | 753 |
| 1200 x 400 x 1700 | 125 | • EPI00203 | 600 | • EPI00235 | 707 | • EPI00267 | 813 |
| 1400 x 400 x 1700 | 100 | • EPI00204 | 642 | • EPI00236 | 755 | • EPI00268 | 871 |
| 800 x 400 x 2000 | 275 | • EPI00205 | 540 | • EPI00237 | 626 | • EPI00269 | 712 |
| 1000 x 400 x 2000 | 225 | • EPI00206 | 579 | • EPI00238 | 675 | • EPI00270 | 771 |
| 1200 x 400 x 2000 | 125 | • EPI00207 | 619 | • EPI00239 | 725 | • EPI00271 | 830 |
| 1400 x 400 x 2000 | 100 | • EPI00208 | 658 | • EPI00240 | 773 | • EPI00272 | 887 |
| 800 x 500 x 1700 | 275 | • EPI00209 | 584 | • EPI00241 | 684 | • EPI00273 | 787 |
| 1000 x 500 x 1700 | 225 | • EPI00210 | 624 | • EPI00242 | 734 | • EPI00274 | 846 |
| 1200 x 500 x 1700 | 125 | • EPI00211 | 662 | • EPI00243 | 784 | • EPI00275 | 904 |
| 1400 x 500 x 1700 | 100 | • EPI00212 | 702 | • EPI00244 | 831 | • EPI00276 | 963 |
| 800 x 500 x 2000 | 275 | • EPI00213 | 600 | • EPI00245 | 703 | • EPI00277 | 802 |
| 1000 x 500 x 2000 | 225 | • EPI00214 | 642 | • EPI00246 | 751 | • EPI00278 | 863 |
| 1200 x 500 x 2000 | 125 | • EPI00215 | 680 | • EPI00247 | 800 | • EPI00279 | 922 |
| 1400 x 500 x 2000 | 100 | • EPI00216 | 719 | • EPI00248 | 850 | • EPI00280 | 982 |
| 800 x 600 x 1700 | 250 | • EPI00217 | 624 | • EPI00249 | 734 | • EPI00281 | 846 |
| 1000 x 600 x 1700 | 200 | • EPI00218 | 662 | • EPI00250 | 784 | • EPI00282 | 904 |
| 1200 x 600 x 1700 | 100 | • EPI00219 | 702 | • EPI00251 | 831 | • EPI00283 | 963 |
| 1400 x 600 x 1700 | 75 | • EPI00220 | 741 | • EPI00252 | 881 | • EPI00284 | 1.022 |
| 800 x 600 x 2000 | 250 | • EPI00221 | 642 | • EPI00253 | 751 | • EPI00285 | 863 |
| 1000 x 600 x 2000 | 200 | • EPI00222 | 680 | • EPI00254 | 800 | • EPI00286 | 922 |
| 1200 x 600 x 2000 | 100 | • EPI00223 | 719 | • EPI00255 | 850 | • EPI00287 | 982 |
| 1400 x 600 x 2000 | 75 | • EPI00224 | 757 | • EPI00256 | 898 | • EPI00288 | 1.039 |





CON OMEGAS DE REFUERZO

| Medidas totales (mm) | Carga total (Kg) | 4 Niveles | PVP (€) | 5 Niveles | PVP (€) | 6 Niveles | PVP (€) |
|----------------------|------------------|------------|------------|------------|--------------|------------|--------------|
| 800 x 300 x 1700 | 350 | • EPI00289 | 545 | • EPI00321 | 636 | • EPI00353 | 728 |
| 1000 x 300 x 1700 | 300 | • EPI00290 | 605 | • EPI00322 | 712 | • EPI00354 | 819 |
| 1200 x 300 x 1700 | 200 | • EPI00291 | 666 | • EPI00323 | 789 | • EPI00355 | 910 |
| 1400 x 300 x 1700 | 175 | • EPI00292 | 728 | • EPI00324 | 865 | • EPI00356 | 1.002 |
| 800 x 300 x 2000 | 350 | • EPI00293 | 562 | • EPI00325 | 653 | • EPI00357 | 745 |
| 1000 x 300 x 2000 | 300 | • EPI00294 | 624 | • EPI00326 | 730 | • EPI00358 | 837 |
| 1200 x 300 x 2000 | 200 | • EPI00295 | 683 | • EPI00327 | 806 | • EPI00359 | 927 |
| 1400 x 300 x 2000 | 175 | • EPI00296 | 745 | • EPI00328 | 882 | • EPI00360 | 1.020 |
| 800 x 400 x 1700 | 325 | • EPI00297 | 584 | • EPI00329 | 684 | • EPI00361 | 787 |
| 1000 x 400 x 1700 | 275 | • EPI00298 | 645 | • EPI00330 | 761 | • EPI00362 | 878 |
| 1200 x 400 x 1700 | 175 | • EPI00299 | 706 | • EPI00331 | 838 | • EPI00363 | 969 |
| 1400 x 400 x 1700 | 150 | • EPI00300 | 768 | • EPI00332 | 915 | • EPI00364 | 1.060 |
| 800 x 400 x 2000 | 325 | • EPI00301 | 600 | • EPI00333 | 703 | • EPI00365 | 802 |
| 1000 x 400 x 2000 | 275 | • EPI00302 | 662 | • EPI00334 | 779 | • EPI00366 | 896 |
| 1200 x 400 x 2000 | 175 | • EPI00303 | 723 | • EPI00335 | 855 | • EPI00367 | 987 |
| 1400 x 400 x 2000 | 150 | • EPI00304 | 785 | • EPI00336 | 932 | • EPI00368 | 1.078 |
| 800 x 500 x 1700 | 325 | • EPI00305 | 645 | • EPI00337 | 761 | • EPI00369 | 878 |
| 1000 x 500 x 1700 | 275 | • EPI00306 | 706 | • EPI00338 | 838 | • EPI00370 | 969 |
| 1200 x 500 x 1700 | 175 | • EPI00307 | 768 | • EPI00339 | 915 | • EPI00371 | 1.060 |
| 1400 x 500 x 1700 | 150 | • EPI00308 | 828 | • EPI00340 | 990 | • EPI00372 | 1.153 |
| 800 x 500 x 2000 | 325 | • EPI00309 | 662 | • EPI00341 | 779 | • EPI00373 | 896 |
| 1000 x 500 x 2000 | 275 | • EPI00310 | 723 | • EPI00342 | 855 | • EPI00374 | 987 |
| 1200 x 500 x 2000 | 175 | • EPI00311 | 785 | • EPI00343 | 932 | • EPI00375 | 1.078 |
| 1400 x 500 x 2000 | 150 | • EPI00312 | 846 | • EPI00344 | 1.008 | • EPI00376 | 1.170 |
| 800 x 600 x 1700 | 300 | • EPI00313 | 683 | • EPI00345 | 811 | • EPI00377 | 937 |
| 1000 x 600 x 1700 | 250 | • EPI00314 | 745 | • EPI00346 | 886 | • EPI00378 | 1.028 |
| 1200 x 600 x 1700 | 150 | • EPI00315 | 806 | • EPI00347 | 963 | • EPI00379 | 1.119 |
| 1400 x 600 x 1700 | 125 | • EPI00316 | 867 | • EPI00348 | 1.039 | • EPI00380 | 1.211 |
| 800 x 600 x 2000 | 300 | • EPI00317 | 702 | • EPI00349 | 828 | • EPI00381 | 954 |
| 1000 x 600 x 2000 | 250 | • EPI00318 | 763 | • EPI00350 | 904 | • EPI00382 | 1.045 |
| 1200 x 600 x 2000 | 150 | • EPI00319 | 822 | • EPI00351 | 982 | • EPI00383 | 1.137 |
| 1400 x 600 x 2000 | 125 | • EPI00320 | 884 | • EPI00352 | 1.057 | • EPI00384 | 1.227 |



ESTANTE ADICIONAL DE 1MM DE ESPESOR

- Para personalizar la estantería añadiendo un estante adicional.
- Fabricado en acero inoxidable AISI 304 18/10.
- Modelos con o sin omegas de refuerzo.



| Medidas totales (mm) | Sin omega de refuerzo | PVP (€) | Con omega de refuerzo | PVP (€) |
|----------------------|-----------------------|---------|-----------------------|---------|
| 800 x 300 x 1700 | • EAI00001 | 55 | • EAI00033 | 69 |
| 1000 x 300 x 1700 | • EAI00002 | 65 | • EAI00034 | 85 |
| 1200 x 300 x 1700 | • EAI00003 | 74 | • EAI00035 | 100 |
| 1400 x 300 x 1700 | • EAI00004 | 84 | • EAI00036 | 116 |
| 800 x 300 x 2000 | • EAI00005 | 55 | • EAI00037 | 69 |
| 1000 x 300 x 2000 | • EAI00006 | 65 | • EAI00038 | 85 |
| 1200 x 300 x 2000 | • EAI00007 | 74 | • EAI00039 | 100 |
| 1400 x 300 x 2000 | • EAI00008 | 84 | • EAI00040 | 116 |
| 800 x 400 x 1700 | • EAI00009 | 65 | • EAI00041 | 80 |
| 1000 x 400 x 1700 | • EAI00010 | 74 | • EAI00042 | 94 |
| 1200 x 400 x 1700 | • EAI00011 | 84 | • EAI00043 | 110 |
| 1400 x 400 x 1700 | • EAI00012 | 93 | • EAI00044 | 125 |
| 800 x 400 x 2000 | • EAI00013 | 65 | • EAI00045 | 80 |
| 1000 x 400 x 2000 | • EAI00014 | 74 | • EAI00046 | 94 |
| 1200 x 400 x 2000 | • EAI00015 | 84 | • EAI00047 | 110 |
| 1400 x 400 x 2000 | • EAI00016 | 93 | • EAI00048 | 125 |
| 800 x 500 x 1700 | • EAI00017 | 80 | • EAI00049 | 94 |
| 1000 x 500 x 1700 | • EAI00018 | 88 | • EAI00050 | 110 |
| 1200 x 500 x 1700 | • EAI00019 | 99 | • EAI00051 | 125 |
| 1400 x 500 x 1700 | • EAI00020 | 109 | • EAI00052 | 141 |
| 800 x 500 x 2000 | • EAI00021 | 80 | • EAI00053 | 94 |
| 1000 x 500 x 2000 | • EAI00022 | 88 | • EAI00054 | 110 |
| 1200 x 500 x 2000 | • EAI00023 | 99 | • EAI00055 | 125 |
| 1400 x 500 x 2000 | • EAI00024 | 109 | • EAI00056 | 141 |
| 800 x 600 x 1700 | • EAI00025 | 88 | • EAI00057 | 105 |
| 1000 x 600 x 1700 | • EAI00026 | 99 | • EAI00058 | 121 |
| 1200 x 600 x 1700 | • EAI00027 | 109 | • EAI00059 | 135 |
| 1400 x 600 x 1700 | • EAI00028 | 119 | • EAI00060 | 150 |
| 800 x 600 x 2000 | • EAI00029 | 88 | • EAI00061 | 105 |
| 1000 x 600 x 2000 | • EAI00030 | 99 | • EAI00062 | 121 |
| 1200 x 600 x 2000 | • EAI00031 | 109 | • EAI00063 | 135 |
| 1400 x 600 x 2000 | • EAI00032 | 119 | • EAI00064 | 150 |



ESTANTE ADICIONAL DE 1,5MM DE ESPESOR

- Para personalizar la estantería añadiendo un estante adicional.
- Fabricado en acero inoxidable AISI 304 18/10.
- Modelos con o sin omegas de refuerzo.



| Medidas totales (mm) | Sin omega de refuerzo | PVP (€) | Con omega de refuerzo | PVP (€) |
|----------------------|-----------------------|---------|-----------------------|---------|
| 800 x 300 x 1700 | • EAI00065 | 77 | • EAI00097 | 90 |
| 1000 x 300 x 1700 | • EAI00066 | 86 | • EAI00098 | 106 |
| 1200 x 300 x 1700 | • EAI00067 | 95 | • EAI00099 | 122 |
| 1400 x 300 x 1700 | • EAI00068 | 105 | • EAI00100 | 137 |
| 800 x 300 x 2000 | • EAI00069 | 77 | • EAI00101 | 90 |
| 1000 x 300 x 2000 | • EAI00070 | 86 | • EAI00102 | 106 |
| 1200 x 300 x 2000 | • EAI00071 | 95 | • EAI00103 | 122 |
| 1400 x 300 x 2000 | • EAI00072 | 105 | • EAI00104 | 137 |
| 800 x 400 x 1700 | • EAI00073 | 86 | • EAI00105 | 102 |
| 1000 x 400 x 1700 | • EAI00074 | 95 | • EAI00106 | 116 |
| 1200 x 400 x 1700 | • EAI00075 | 105 | • EAI00107 | 133 |
| 1400 x 400 x 1700 | • EAI00076 | 116 | • EAI00108 | 147 |
| 800 x 400 x 2000 | • EAI00077 | 86 | • EAI00109 | 102 |
| 1000 x 400 x 2000 | • EAI00078 | 95 | • EAI00110 | 116 |
| 1200 x 400 x 2000 | • EAI00079 | 105 | • EAI00111 | 133 |
| 1400 x 400 x 2000 | • EAI00080 | 116 | • EAI00112 | 147 |
| 800 x 500 x 1700 | • EAI00081 | 102 | • EAI00113 | 116 |
| 1000 x 500 x 1700 | • EAI00082 | 112 | • EAI00114 | 133 |
| 1200 x 500 x 1700 | • EAI00083 | 122 | • EAI00115 | 147 |
| 1400 x 500 x 1700 | • EAI00084 | 132 | • EAI00116 | 163 |
| 800 x 500 x 2000 | • EAI00085 | 102 | • EAI00117 | 116 |
| 1000 x 500 x 2000 | • EAI00086 | 112 | • EAI00118 | 133 |
| 1200 x 500 x 2000 | • EAI00087 | 122 | • EAI00119 | 147 |
| 1400 x 500 x 2000 | • EAI00088 | 132 | • EAI00120 | 163 |
| 800 x 600 x 1700 | • EAI00089 | 112 | • EAI00121 | 126 |
| 1000 x 600 x 1700 | • EAI00090 | 122 | • EAI00122 | 142 |
| 1200 x 600 x 1700 | • EAI00091 | 132 | • EAI00123 | 156 |
| 1400 x 600 x 1700 | • EAI00092 | 141 | • EAI00124 | 172 |
| 800 x 600 x 2000 | • EAI00093 | 112 | • EAI00125 | 126 |
| 1000 x 600 x 2000 | • EAI00094 | 122 | • EAI00126 | 142 |
| 1200 x 600 x 2000 | • EAI00095 | 132 | • EAI00127 | 156 |
| 1400 x 600 x 2000 | • EAI00096 | 141 | • EAI00128 | 172 |



ESTANTERÍAS DE PIE INOXIDABLES

ESTANTERÍA DE PIE DE ACERO INOXIDABLE

- Fabricada en acero inoxidable.
- Altura de los estantes regulable cada 160 mm, hasta 11 niveles posibles.
- Dos profundidades de estantería disponibles: 400 y 500 mm.
- Altura de estantería disponible: 1800 mm.
- Bandejas disponibles en opciones lisas, perforadas o de polipropileno.
- Bandejas extraíbles para facilitar su limpieza.
- Patas regulables en altura para garantizar máxima estabilidad en cualquier superficie.
- Diseñada para un fácil montaje sin usar herramientas.
- Carga máxima por estante: 170 kg.



· Diseñada para un fácil montaje sin usar herramientas



SOPORTES

- Fabricados en tubo de 30 x 30 mm en acero inoxidable con taco regulable.

SOPORTE CENTRAL

| Medidas totales (mm) | Código | PVP (€) |
|----------------------|------------|---------|
| 1800 x 400 | • KCC01840 | 118 |
| 1800 x 500 | • KCC01850 | 121 |

SOPORTE LATERAL

| Medidas totales (mm) | Código | PVP (€) |
|----------------------|------------|---------|
| 1800 x 400 | • KCL01840 | 109 |
| 1800 x 500 | • KCL01850 | 111 |



PIEZA ANGULAR

- Accesorio en acero inoxidable AISI 304 18/10 para el montaje de estanterías en ángulo.

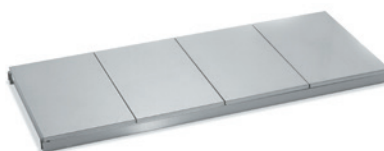
| Medidas totales (mm) | Código | PVP (€) |
|----------------------|------------|---------|
| 400 | • KA000400 | 39 |
| 500 | • KA000500 | 41 |



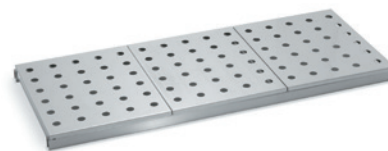
ESTANTE CON BANDEJAS



· Bandejas de polipropileno



· Bandejas de acero inoxidable lisas



· Bandejas de acero inoxidable perforadas

FONDO 400

| Medidas (mm) | Bandejas de polipropileno | PVP (€) | Bandejas de acero inoxidable lisas | PVP (€) | Bandejas de acero inoxidable perforadas | PVP (€) |
|--------------|---------------------------|---------|------------------------------------|---------|---|---------|
| 600 x 400 | • K4060003 | 56 | • K4060002 | 83 | • K4060001 | 103 |
| 700 x 400 | • K4070003 | 62 | • K4070002 | 87 | • K4070001 | 110 |
| 800 x 400 | • K4080003 | 66 | • K4080002 | 94 | • K4080001 | 117 |
| 900 x 400 | • K4090003 | 73 | • K4090002 | 114 | • K4090001 | 145 |
| 1000 x 400 | • K4100003 | 78 | • K4100002 | 118 | • K4100001 | 150 |
| 1100 x 400 | • K4110003 | 84 | • K4110002 | 125 | • K4110001 | 159 |
| 1200 x 400 | • K4120003 | 87 | • K4120002 | 130 | • K4120001 | 164 |
| 1300 x 400 | • K4130003 | 99 | • K4130002 | 156 | • K4130001 | 193 |
| 1400 x 400 | • K4140003 | 102 | • K4140002 | 158 | • K4140001 | 199 |
| 1500 x 400 | • K4150003 | 106 | • K4150002 | 160 | • K4150001 | 203 |
| 1600 x 400 | • K4160003 | 118 | • K4160002 | 174 | • K4160001 | 219 |

FONDO 500

| Medidas (mm) | Bandejas de polipropileno | PVP (€) | Bandejas de acero inoxidable lisas | PVP (€) | Bandejas de acero inoxidable perforadas | PVP (€) |
|--------------|---------------------------|---------|------------------------------------|---------|---|---------|
| 600 x 500 | • K5060003 | 58 | • K5060002 | 89 | • K5060001 | 110 |
| 700 x 500 | • K5070003 | 64 | • K5070002 | 99 | • K5070001 | 113 |
| 800 x 500 | • K5080003 | 71 | • K5080002 | 105 | • K5080001 | 124 |
| 900 x 500 | • K5090003 | 78 | • K5090002 | 127 | • K5090001 | 157 |
| 1000 x 500 | • K5100003 | 81 | • K5100002 | 132 | • K5100001 | 160 |
| 1100 x 500 | • K5110003 | 87 | • K5110002 | 139 | • K5110001 | 171 |
| 1200 x 500 | • K5120003 | 93 | • K5120002 | 145 | • K5120001 | 173 |
| 1300 x 500 | • K5130003 | 105 | • K5130002 | 171 | • K5130001 | 211 |
| 1500 x 500 | • K5140003 | 107 | • K5140002 | 174 | • K5140001 | 215 |
| 1400 x 500 | • K5150003 | 110 | • K5150002 | 179 | • K5150001 | 218 |
| 1600 x 500 | • K5160003 | 125 | • K5160002 | 193 | • K5160001 | 235 |



ESTANTERÍAS DE PIE INOXIDABLES

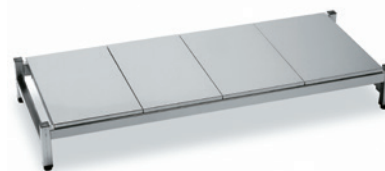
BANDEJAS



| Medidas totales (mm) | Polipropileno | PVP (€) | Acero inoxidable lisa | PVP (€) | Acero inoxidable perforada | PVP (€) |
|----------------------|---------------|-----------|-----------------------|-----------|----------------------------|-----------|
| 300 x 400 | • KP304003 | 9 | • KP304002 | 24 | • KP304001 | 33 |
| 400 x 400 | • KP404003 | 12 | • KP404002 | 26 | • KP404001 | 38 |
| 300 x 500 | • KP305003 | 10 | • KP305002 | 27 | • KP305001 | 37 |
| 400 x 500 | • KP405003 | 15 | • KP405002 | 31 | • KP405001 | 41 |

BANCADA

· Para almacenar cajas en lugares donde la normativa sanitaria prohíbe el contacto directo con el suelo.



| Medidas totales (mm) | Polipropileno | PVP (€) | Acero inoxidable lisa | PVP (€) |
|----------------------|---------------|------------|-----------------------|------------|
| 1060 x 500 x 180 | • KB106003 | 218 | • KB106002 | 274 |
| 1260 x 500 x 180 | • KB126003 | 243 | • KB126002 | 296 |
| 1460 x 500 x 180 | • KB146003 | 252 | • KB146002 | 308 |
| 1660 x 500 x 180 | • KB166003 | 264 | • KB166002 | 319 |

BARRA DE COLGAR PARA ESTANTERÍA

· Fabricada en tubo de Ø 30 mm de acero inoxidable AISI 304 18/10.

| Medida (mm) | Código | PVP (€) |
|-------------|------------|------------|
| 800 | • KBC00800 | 77 |
| 900 | • KBC00900 | 82 |
| 1000 | • KBC01000 | 85 |
| 1100 | • KBC01100 | 87 |
| 1200 | • KBC01200 | 91 |
| 1300 | • KBC01300 | 96 |
| 1400 | • KBC01400 | 100 |
| 1500 | • KBC01500 | 103 |
| 1600 | • KBC01600 | 106 |



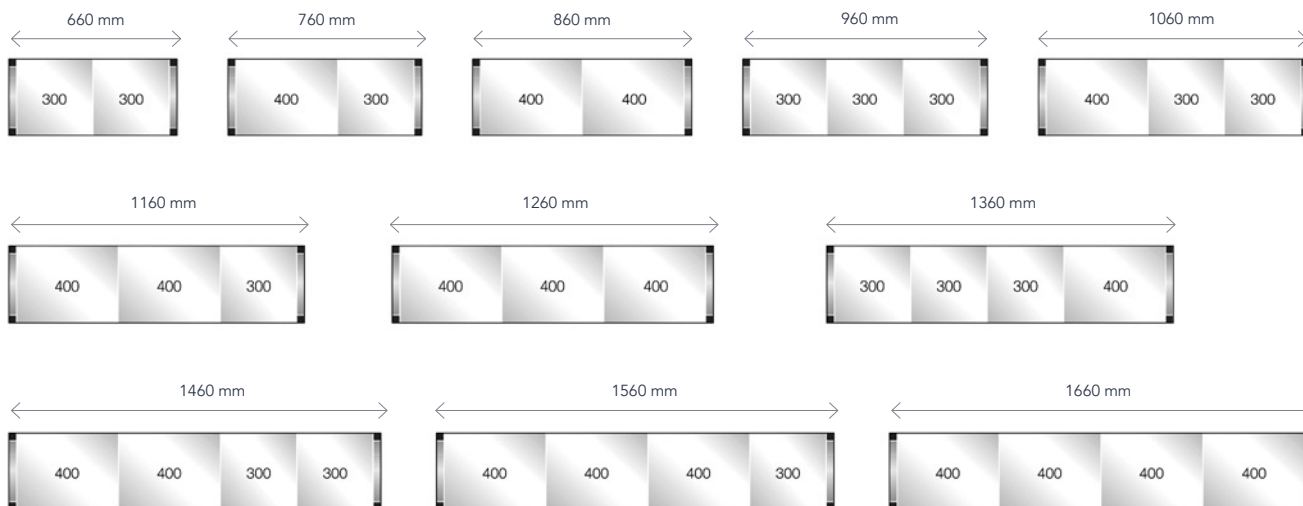
RUEDAS

· El pack incluye 4 ruedas de Ø 125 mm, dos de ellas con frenos.

| Modelo | Código | PVP (€) |
|---------------|------------|------------|
| Pack 4 ruedas | • KRU00001 | 222 |



COMPOSICIONES BÁSICAS DE ESTANTERÍAS MODULARES



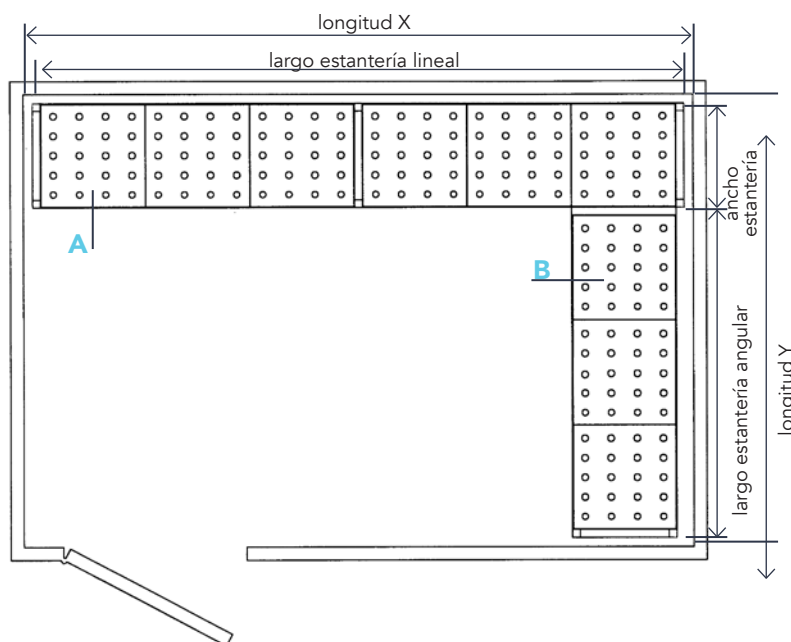
EJEMPLO DE PEDIDO DE ESTANTERÍA:

- Para seleccionar las estanterías modulares solo necesita conocer las dimensiones totales de la cámara.
- En primer lugar, ajustar el largo de la estantería lineal a la longitud X de la cámara.
- Para solicitar el largo de la estantería angular, se ha de descontar de la longitud Y de la cámara el ancho de la estantería lineal.
- En caso de que la cámara tenga radios sanitarios, también se ha de descontarlos de la longitud de la cámara.

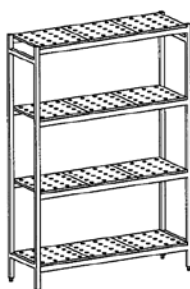
Ejemplo de cálculo de presupuesto para estantería angular de acero inoxidable y polipropileno de fondo 400 mm y cuatro niveles, colocada en una cámara frigorífica.

| | | |
|-----------------------------|---------------|-------------------------|
| Cámara frigorífica | X=3000 | Y=2400 |
| Estantería 4 niveles | lineal (3000) | angular (2400-400=2000) |
| Código | KIT00087 | KIT02077 |
| Medida estantería | 2990 mm | 1960 mm |
| PVP (€) | 1.150 | 1.001 |

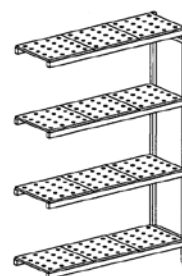
Precio total estantería angular 2.151 €



A-estantería lineal

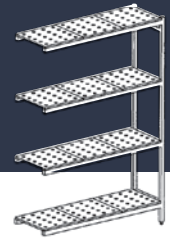


B-estantería angular



ESTANTERÍAS DE PIE INOXIDABLES ANGULARES ALTURA 1800

ESTANTERÍAS DE ACERO INOXIDABLE CON BANDEJAS INOX PERFORADAS



FONDO 400

| Largo (mm) | 3 niveles PVP (€) | 4 niveles PVP (€) | 5 niveles PVP (€) |
|------------|-------------------|-------------------|-------------------|
| 630 | ● KIT02745 543 | ● KIT02807 686 | ● KIT02869 827 |
| 730 | ● KIT02746 568 | ● KIT02808 719 | ● KIT02870 868 |
| 830 | ● KIT02747 590 | ● KIT02809 747 | ● KIT02871 905 |
| 930 | ● KIT02748 673 | ● KIT02810 856 | ● KIT02872 1.040 |
| 1030 | ● KIT02749 686 | ● KIT02811 874 | ● KIT02873 1.066 |
| 1130 | ● KIT02750 715 | ● KIT02812 914 | ● KIT02874 1.112 |
| 1230 | ● KIT02751 730 | ● KIT02813 932 | ● KIT02875 1.137 |
| 1330 | ● KIT02752 822 | ● KIT02814 1.055 | ● KIT02876 1.290 |
| 1430 | ● KIT02753 836 | ● KIT02815 1.076 | ● KIT02877 1.313 |
| 1530 | ● KIT02754 850 | ● KIT02816 1.094 | ● KIT02878 1.338 |
| 1630 | ● KIT02755 901 | ● KIT02817 1.161 | ● KIT02879 1.418 |
| 1660 | ● KIT02756 1.063 | ● KIT02818 1.335 | ● KIT02880 1.609 |
| 1760 | ● KIT02757 1.143 | ● KIT02819 1.445 | ● KIT02881 1.747 |
| 1860 | ● KIT02758 1.225 | ● KIT02820 1.554 | ● KIT02882 1.881 |
| 1960 | ● KIT02759 1.237 | ● KIT02821 1.575 | ● KIT02883 1.907 |
| 2060 | ● KIT02760 1.254 | ● KIT02822 1.591 | ● KIT02884 1.931 |
| 2160 | ● KIT02761 1.282 | ● KIT02823 1.630 | ● KIT02885 1.976 |
| 2260 | ● KIT02762 1.310 | ● KIT02824 1.666 | ● KIT02886 2.024 |
| 2360 | ● KIT02763 1.324 | ● KIT02825 1.686 | ● KIT02887 2.048 |
| 2460 | ● KIT02764 1.338 | ● KIT02826 1.704 | ● KIT02888 2.071 |
| 2560 | ● KIT02765 1.432 | ● KIT02827 1.827 | ● KIT02889 2.227 |
| 2660 | ● KIT02766 1.523 | ● KIT02828 1.952 | ● KIT02890 2.379 |
| 2760 | ● KIT02767 1.538 | ● KIT02829 1.970 | ● KIT02891 2.404 |
| 2860 | ● KIT02768 1.553 | ● KIT02830 1.990 | ● KIT02892 2.427 |
| 2960 | ● KIT02769 1.565 | ● KIT02831 2.010 | ● KIT02893 2.452 |
| 3060 | ● KIT02770 1.580 | ● KIT02832 2.028 | ● KIT02894 2.475 |
| 3160 | ● KIT02771 1.630 | ● KIT02833 2.094 | ● KIT02895 2.557 |
| 3260 | ● KIT02772 1.679 | ● KIT02834 2.158 | ● KIT02896 2.640 |
| 3290 | ● KIT02773 1.876 | ● KIT02835 2.382 | ● KIT02897 2.889 |
| 3390 | ● KIT02774 1.905 | ● KIT02836 2.420 | ● KIT02898 2.938 |
| 3490 | ● KIT02775 1.919 | ● KIT02837 2.439 | ● KIT02899 2.960 |
| 3590 | ● KIT02776 1.933 | ● KIT02838 2.459 | ● KIT02900 2.983 |
| 3690 | ● KIT02777 1.947 | ● KIT02839 2.479 | ● KIT02901 3.009 |
| 3790 | ● KIT02778 2.040 | ● KIT02840 2.600 | ● KIT02902 3.161 |
| 3890 | ● KIT02779 2.132 | ● KIT02841 2.726 | ● KIT02903 3.317 |
| 3990 | ● KIT02780 2.226 | ● KIT02842 2.848 | ● KIT02904 3.469 |
| 4090 | ● KIT02781 2.240 | ● KIT02843 2.866 | ● KIT02905 3.493 |
| 4190 | ● KIT02782 2.254 | ● KIT02844 2.886 | ● KIT02906 3.519 |
| 4290 | ● KIT02783 2.268 | ● KIT02845 2.906 | ● KIT02907 3.541 |
| 4390 | ● KIT02784 2.284 | ● KIT02846 2.924 | ● KIT02908 3.566 |
| 4490 | ● KIT02785 2.297 | ● KIT02847 2.943 | ● KIT02909 3.590 |
| 4590 | ● KIT02786 2.311 | ● KIT02848 2.962 | ● KIT02910 3.614 |
| 4690 | ● KIT02787 2.362 | ● KIT02849 3.027 | ● KIT02911 3.696 |
| 4790 | ● KIT02788 2.408 | ● KIT02850 3.093 | ● KIT02912 3.777 |
| 4890 | ● KIT02789 2.458 | ● KIT02851 3.158 | ● KIT02913 3.858 |
| 4920 | ● KIT02790 2.557 | ● KIT02852 3.249 | ● KIT02914 3.944 |
| 5020 | ● KIT02791 2.649 | ● KIT02853 3.375 | ● KIT02915 4.098 |
| 5120 | ● KIT02792 2.743 | ● KIT02854 3.497 | ● KIT02916 4.252 |
| 5220 | ● KIT02793 2.836 | ● KIT02855 3.621 | ● KIT02917 4.407 |
| 5320 | ● KIT02794 2.926 | ● KIT02856 3.744 | ● KIT02918 4.560 |
| 5420 | ● KIT02795 2.942 | ● KIT02857 3.764 | ● KIT02919 4.584 |
| 5520 | ● KIT02796 2.955 | ● KIT02858 3.782 | ● KIT02920 4.608 |
| 5620 | ● KIT02797 2.968 | ● KIT02859 3.801 | ● KIT02921 4.632 |
| 5720 | ● KIT02798 2.984 | ● KIT02860 3.820 | ● KIT02922 4.655 |
| 5820 | ● KIT02799 2.999 | ● KIT02861 3.840 | ● KIT02923 4.680 |
| 5920 | ● KIT02800 3.014 | ● KIT02862 3.859 | ● KIT02924 4.704 |
| 6020 | ● KIT02801 3.027 | ● KIT02863 3.877 | ● KIT02925 4.726 |
| 6120 | ● KIT02802 3.041 | ● KIT02864 3.896 | ● KIT02926 4.752 |
| 6220 | ● KIT02803 3.089 | ● KIT02865 3.960 | ● KIT02927 4.832 |
| 6320 | ● KIT02804 3.138 | ● KIT02866 4.027 | ● KIT02928 4.912 |
| 6420 | ● KIT02805 3.188 | ● KIT02867 4.091 | ● KIT02929 4.995 |
| 6520 | ● KIT02806 3.237 | ● KIT02868 4.155 | ● KIT02930 5.077 |

FONDO 500

| Largo (mm) | 3 niveles PVP (€) | 4 niveles PVP (€) | 5 niveles PVP (€) |
|------------|-------------------|-------------------|-------------------|
| 630 | ● KIT02931 576 | ● KIT02993 727 | ● KIT03055 878 |
| 730 | ● KIT02932 598 | ● KIT02994 757 | ● KIT03056 916 |
| 830 | ● KIT02933 619 | ● KIT02995 783 | ● KIT03057 947 |
| 930 | ● KIT02934 715 | ● KIT02996 915 | ● KIT03058 1.112 |
| 1030 | ● KIT02935 729 | ● KIT02997 930 | ● KIT03059 1.131 |
| 1130 | ● KIT02936 755 | ● KIT02998 964 | ● KIT03060 1.176 |
| 1230 | ● KIT02937 766 | ● KIT02999 981 | ● KIT03061 1.196 |
| 1330 | ● KIT02938 874 | ● KIT03000 1.125 | ● KIT03062 1.379 |
| 1430 | ● KIT02939 890 | ● KIT03001 1.143 | ● KIT03063 1.399 |
| 1530 | ● KIT02940 901 | ● KIT03002 1.161 | ● KIT03064 1.418 |
| 1630 | ● KIT02941 946 | ● KIT03003 1.221 | ● KIT03065 1.496 |
| 1660 | ● KIT02942 1.111 | ● KIT03004 1.400 | ● KIT03066 1.689 |
| 1760 | ● KIT02943 1.210 | ● KIT03005 1.533 | ● KIT03067 1.853 |
| 1860 | ● KIT02944 1.307 | ● KIT03006 1.663 | ● KIT03068 2.017 |
| 1960 | ● KIT02945 1.320 | ● KIT03007 1.680 | ● KIT03069 2.038 |
| 2060 | ● KIT02946 1.333 | ● KIT03008 1.693 | ● KIT03070 2.058 |
| 2160 | ● KIT02947 1.360 | ● KIT03009 1.729 | ● KIT03071 2.102 |
| 2260 | ● KIT02948 1.383 | ● KIT03010 1.765 | ● KIT03072 2.145 |
| 2360 | ● KIT02949 1.396 | ● KIT03011 1.779 | ● KIT03073 2.164 |
| 2460 | ● KIT02950 1.408 | ● KIT03012 1.797 | ● KIT03074 2.082 |
| 2560 | ● KIT02951 1.517 | ● KIT03013 1.943 | ● KIT03075 2.367 |
| 2660 | ● KIT02952 1.628 | ● KIT03014 2.091 | ● KIT03076 2.551 |
| 2760 | ● KIT02953 1.641 | ● KIT03015 2.104 | ● KIT03077 2.570 |
| 2860 | ● KIT02954 1.652 | ● KIT03016 2.121 | ● KIT03078 2.591 |
| 2960 | ● KIT02955 1.663 | ● KIT03017 2.137 | ● KIT03079 2.611 |
| 3060 | ● KIT02956 1.675 | ● KIT03018 2.152 | ● KIT03080 2.632 |
| 3160 | ● KIT02957 1.724 | ● KIT03019 2.215 | ● KIT03081 2.706 |
| 3260 | ● KIT02958 1.768 | ● KIT03020 2.278 | ● KIT03082 2.784 |
| 3290 | ● KIT02959 1.988 | ● KIT03021 2.529 | ● KIT03083 3.072 |
| 3390 | ● KIT02960 2.015 | ● KIT03022 2.564 | ● KIT03084 3.115 |
| 3490 | ● KIT02961 2.027 | ● KIT03023 2.581 | ● KIT03085 3.135 |
| 3590 | ● KIT02962 2.040 | ● KIT03024 2.596 | ● KIT03086 3.156 |
| 3690 | ● KIT02963 2.050 | ● KIT03025 2.614 | ● KIT03087 3.174 |
| 3790 | ● KIT02964 2.159 | ● KIT03026 2.759 | ● KIT03088 3.357 |
| 3890 | ● KIT02965 2.269 | ● KIT03027 2.904 | ● KIT03089 3.539 |
| 3990 | ● KIT02966 2.379 | ● KIT03028 3.051 | ● KIT03090 3.722 |
| 4090 | ● KIT02967 2.391 | ● KIT03029 3.068 | ● KIT03091 3.743 |
| 4190 | ● KIT02968 2.403 | ● KIT03030 3.082 | ● KIT03092 3.763 |
| 4290 | ● KIT02969 2.416 | ● KIT03031 3.100 | ● KIT03093 3.783 |
| 4390 | ● KIT02970 2.427 | ● KIT03032 3.116 | ● KIT03094 3.805 |
| 4490 | ● KIT02971 2.439 | ● KIT03033 3.132 | ● KIT03095 3.822 |
| 4590 | ● KIT02972 2.452 | ● KIT03034 3.146 | ● KIT03096 3.845 |
| 4690 | ● KIT02973 2.499 | ● KIT03035 3.210 | ● KIT03097 3.921 |
| 4790 | ● KIT02974 2.546 | ● KIT03036 3.271 | ● KIT03098 3.999 |
| 4890 | ● KIT02975 2.592 | ● KIT03037 3.333 | ● KIT03099 4.076 |
| 4920 | ● KIT02976 2.695 | ● KIT03038 3.428 | ● KIT03100 4.164 |
| 5020 | ● KIT02977 2.804 | ● KIT03039 3.575 | ● KIT03101 4.347 |
| 5120 | ● KIT02978 2.914 | ● KIT03040 3.720 | ● KIT03102 4.530 |
| 5220 | ● KIT02979 3.023 | ● KIT03041 3.867 | ● KIT03103 4.712 |
| 5320 | ● KIT02980 3.132 | ● KIT03042 4.012 | ● KIT03104 4.895 |
| 5420 | ● KIT02981 3.143 | ● KIT03043 4.029 | ● KIT03105 4.913 |
| 5520 | ● KIT02982 3.156 | ● KIT03044 4.044 | ● KIT03106 4.933 |
| 5620 | ● KIT02983 3.167 | ● KIT03045 4.062 | ● KIT03107 4.956 |
| 5720 | ● KIT02984 3.180 | ● KIT03046 4.077 | ● KIT03108 4.976 |
| 5820 | ● KIT02985 3.194 | ● KIT03047 4.092 | ● KIT03109 4.995 |
| 5920 | ● KIT02986 3.204 | ● KIT03048 4.110 | ● KIT03110 5.016 |
| 6020 | ● KIT02987 3.216 | ● KIT03049 4.127 | ● KIT03111 5.036 |
| 6120 | ● KIT02988 3.228 | ● KIT03050 4.141 | ● KIT03112 5.055 |
| 6220 | ● KIT02989 3.275 | ● KIT03051 4.203 | ● KIT03113 5.133 |
| 6320 | ● KIT02990 3.320 | ● KIT03052 4.264 | ● KIT03114 5.210 |
| 6420 | ● KIT02991 3.370 | ● KIT03053 4.328 | ● KIT03115 5.288 |
| 6520 | ● KIT02992 3.414 | ● KIT03054 4.391 | ● KIT03116 5.365 |

ESTANTERÍAS DE PIE DE ALUMINIO

ESTANTERÍA DE PIE DE ALUMINIO

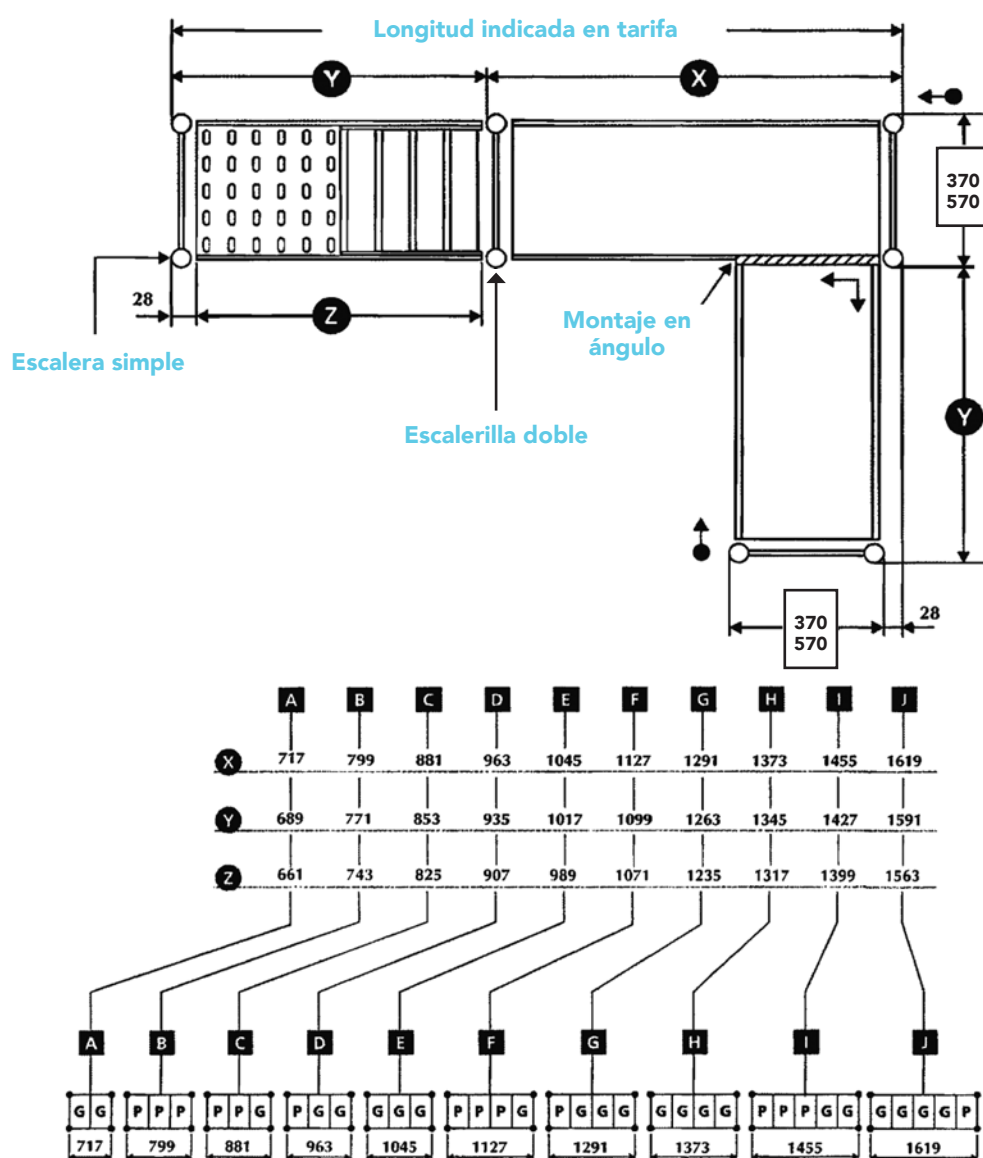
- Diseñada especialmente para su colocación en cámaras frigoríficas.
- Facilidad de montaje mediante anclajes.
- Estructura robusta en aluminio de 20 micras.
- Capacidad de 150 Kg por estante repartidos uniformemente.
- Estantes regulables en altura cada 150 mm.
- Parrillas de polipropileno autoventiladas, amovibles y lavables en lavavajillas.
- Dos profundidades: 370 y 570 mm medida Gastronorm.
- Dos alturas de estanterías: 1700 y 2000 mm.
- Sistema de montaje con anclajes que permite ahorrar tiempo de instalación.



· Detalle de la pieza de anclaje

Esquema explicativo de las diferentes combinaciones de anchura de balda.
Estas estanterías cuentan con 10 longitudes diferentes de estantes por cada profundidad.

Los kits incluyen: 2 largueros, 4 piezas de anclaje y conjunto de parrillas según esquema adjunto

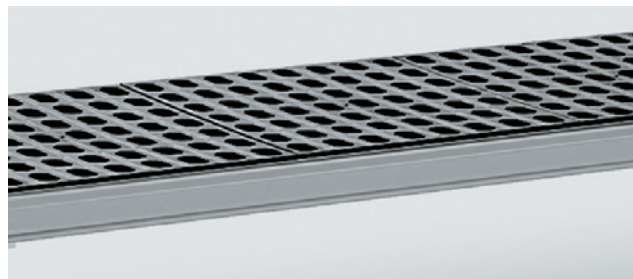


| Fondo | 370 | 570 |
|---------|-----------|-----------|
| Grande | 325 x 325 | 525 x 325 |
| Pequeña | 325 x 245 | 525 x 245 |

ESTANTERÍAS DE PIE DE ALUMINIO

BANDEJA DE POLIPROPILENO

- Fabricada totalmente en polipropileno alimenticio de alta densidad.
- Incluye 2 largueros, 4 piezas de anclaje y conjunto de parrillas según esquema de la página 125.
- Fácil montaje.
- Dos anchuras de parrillas: 370 mm y 570 mm.



ANCHO 370 MM

| Longitud (mm) | Combinación parrillas | Código | PVP (€) |
|---------------|-----------------------|------------|------------|
| 661 | 2G | • EAB00001 | 68 |
| 743 | 3P | • EAB00002 | 71 |
| 825 | 2P + 1G | • EAB00003 | 79 |
| 907 | 1P + 2G | • EAB00004 | 83 |
| 989 | 3G | • EAB00005 | 86 |
| 1071 | 3P + 1G | • EAB00006 | 93 |
| 1235 | 1P + 3G | • EAB00007 | 100 |
| 1317 | 4G | • EAB00008 | 105 |
| 1399 | 3P + 2G | • EAB00009 | 113 |
| 1563 | 1P + 4G | • EAB00010 | 118 |

ANCHO 570 MM

| Longitud (mm) | Combinación parrillas | Código | PVP (€) |
|---------------|-----------------------|------------|------------|
| 661 | 2G | • EAB00011 | 70 |
| 743 | 3P | • EAB00012 | 78 |
| 825 | 2P + 1G | • EAB00013 | 83 |
| 907 | 1P + 2G | • EAB00014 | 88 |
| 989 | 3G | • EAB00015 | 91 |
| 1071 | 3P + 1G | • EAB00016 | 98 |
| 1235 | 1P + 3G | • EAB00017 | 105 |
| 1317 | 4G | • EAB00018 | 113 |
| 1399 | 3P + 2G | • EAB00019 | 120 |
| 1563 | 1P + 4G | • EAB00020 | 123 |

SOPORTE

- Fabricado en dos alturas: 1700 o 2000 mm.
- Cuenta con pies regulables para adaptarse a cualquier tipo de suelo.
- Mecanizadas para la fijación de estantes cada 150 mm.

ANCHO 370

| Altura soporte (mm) | Soporte lateral | PVP (€) | Soporte central | PVP (€) |
|---------------------|-----------------|------------|-----------------|------------|
| 1700 | • EASL0001 | 99 | • EASC0001 | 104 |
| 2000 | • EASL0002 | 136 | • EASC0002 | 141 |

ANCHO 570

| Altura soporte (mm) | Soporte lateral | PVP (€) | Soporte central | PVP (€) |
|---------------------|-----------------|------------|-----------------|------------|
| 1700 | • EASL0003 | 111 | • EASC0003 | 115 |
| 2000 | • EASL0004 | 151 | • EASC0004 | 155 |



PIEZA ANGULAR

- Accesorio para el montaje de estantería en ángulo.
- Precio por unidad.

| Para modelo | Código | PVP (€) |
|-------------|------------|-----------|
| Ancho 370 | • EAPA0001 | 18 |
| Ancho 570 | • EAPA0002 | 18 |



BANCADA

- Diseñada especialmente para cumplir las normativas higiénico-sanitarias en cámaras frigoríficas, que prohíben el contacto directo con el suelo de cajas u otros productos.



ANCHO 370 MM

| Medidas totales (mm) | Código | PVP (€) |
|----------------------|------------|------------|
| 717 x 370 x 250 | • EABN0001 | 155 |
| 799 x 370 x 250 | • EABN0002 | 169 |
| 881 x 370 x 250 | • EABN0003 | 175 |
| 963 x 370 x 250 | • EABN0004 | 179 |
| 1045 x 370 x 250 | • EABN0005 | 183 |
| 1127 x 370 x 250 | • EABN0006 | 189 |
| 1291 x 370 x 250 | • EABN0007 | 196 |
| 1373 x 370 x 250 | • EABN0008 | 203 |
| 1455 x 370 x 250 | • EABN0009 | 209 |
| 1619 x 370 x 250 | • EABN0010 | 214 |

ANCHO 570 MM

| Medidas totales (mm) | Código | PVP (€) |
|----------------------|------------|------------|
| 717 x 570 x 250 | • EABN0011 | 176 |
| 799 x 570 x 250 | • EABN0012 | 180 |
| 881 x 570 x 250 | • EABN0013 | 188 |
| 963 x 570 x 250 | • EABN0014 | 191 |
| 1045 x 570 x 250 | • EABN0015 | 194 |
| 1127 x 570 x 250 | • EABN0016 | 201 |
| 1291 x 570 x 250 | • EABN0017 | 209 |
| 1373 x 570 x 250 | • EABN0018 | 215 |
| 1455 x 570 x 250 | • EABN0019 | 220 |
| 1619 x 570 x 250 | • EABN0020 | 224 |



• 24/48 HORAS EXPEDICIÓN

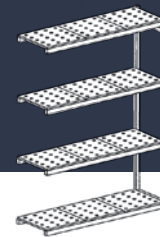

FONDO 370 MM

| Largo (mm) | Baldas | 3 niveles PVP (€) | 4 niveles PVP (€) | 5 niveles PVP (€) |
|------------|------------|-------------------|-------------------|-------------------|
| 717 | A | 343 | 401 | 462 |
| 799 | B | 356 | 421 | 485 |
| 881 | C | 374 | 444 | 516 |
| 963 | D | 385 | 458 | 530 |
| 1045 | E | 394 | 472 | 548 |
| 1127 | F | 410 | 494 | 574 |
| 1291 | G | 435 | 523 | 615 |
| 1373 | H | 449 | 545 | 639 |
| 1455 | I | 466 | 567 | 665 |
| 1619 | J | 477 | 581 | 685 |
| 1734 | 2C | 664 | 804 | 941 |
| 1816 | C + D | 676 | 818 | 961 |
| 1898 | 2D | 684 | 832 | 977 |
| 1980 | D + E | 696 | 846 | 997 |
| 2062 | 2E | 707 | 859 | 1.013 |
| 2144 | E + F | 723 | 881 | 1.040 |
| 2226 | 2F | 741 | 904 | 1.067 |
| 2308 | E + G | 746 | 914 | 1.078 |
| 2390 | F + G | 763 | 935 | 1.106 |
| 2472 | F + H | 778 | 954 | 1.130 |
| 2554 | 2G | 783 | 964 | 1.143 |
| 2636 | G + H | 801 | 986 | 1.168 |
| 2718 | 2H | 815 | 1.006 | 1.195 |
| 2800 | H + I | 832 | 1.026 | 1.222 |
| 2882 | 2I | 850 | 1.049 | 1.247 |
| 2964 | H + J | 845 | 1.043 | 1.241 |
| 3046 | I + J | 859 | 1.065 | 1.269 |
| 3210 | 2J | 873 | 1.080 | 1.290 |
| 3325 | 2E + G | 1.057 | 1.301 | 1.544 |
| 3407 | E + F + G | 1.076 | 1.322 | 1.571 |
| 3489 | 2F + G | 1.092 | 1.344 | 1.598 |
| 3571 | E + 2G | 1.098 | 1.354 | 1.609 |
| 3653 | F + 2G | 1.112 | 1.375 | 1.636 |
| 3735 | F + G + H | 1.129 | 1.396 | 1.661 |
| 3817 | 3G | 1.137 | 1.405 | 1.674 |
| 3899 | 2G + H | 1.152 | 1.425 | 1.699 |
| 3981 | G + 2H | 1.166 | 1.447 | 1.724 |
| 4063 | 3H | 1.183 | 1.465 | 1.750 |
| 4145 | 2H + I | 1.200 | 1.488 | 1.778 |
| 4227 | H + 2I | 1.215 | 1.510 | 1.805 |
| 4309 | 3I | 1.232 | 1.531 | 1.832 |
| 4391 | H + I + J | 1.227 | 1.525 | 1.823 |
| 4473 | 2I + J | 1.242 | 1.548 | 1.852 |
| 4555 | H + 2J | 1.238 | 1.544 | 1.844 |
| 4637 | I + 2J | 1.255 | 1.564 | 1.872 |
| 4801 | 3J | 1.267 | 1.580 | 1.893 |
| 4916 | F + 3G | 1.465 | 1.814 | 2.165 |
| 4998 | F + 2G + H | 1.481 | 1.836 | 2.192 |
| 5080 | 4G | 1.488 | 1.845 | 2.204 |
| 5162 | 3G + H | 1.504 | 1.867 | 2.228 |
| 5244 | 2G + 2H | 1.517 | 1.885 | 2.254 |
| 5326 | G + 3H | 1.534 | 1.906 | 2.280 |
| 5408 | 4H | 1.549 | 1.927 | 2.305 |
| 5490 | 3H + I | 1.566 | 1.949 | 2.334 |
| 5572 | 2H + 2I | 1.580 | 1.970 | 2.361 |
| 5654 | 1H + 3I | 1.598 | 1.992 | 2.388 |

FONDO 570 MM

| Largo (mm) | Baldas | 3 niveles PVP (€) | 4 niveles PVP (€) | 5 niveles PVP (€) |
|------------|------------|-------------------|-------------------|-------------------|
| 717 | A | 370 | 433 | 494 |
| 799 | B | 387 | 457 | 523 |
| 881 | C | 404 | 478 | 552 |
| 963 | D | 415 | 493 | 570 |
| 1045 | E | 428 | 507 | 586 |
| 1127 | F | 446 | 532 | 620 |
| 1291 | G | 468 | 563 | 658 |
| 1373 | H | 485 | 584 | 684 |
| 1455 | I | 503 | 610 | 718 |
| 1619 | J | 518 | 628 | 737 |
| 1734 | 2C | 716 | 862 | 1.011 |
| 1816 | C + D | 727 | 878 | 1.027 |
| 1898 | 2D | 739 | 892 | 1.047 |
| 1980 | D + E | 750 | 908 | 1.065 |
| 2062 | 2E | 761 | 921 | 1.084 |
| 2144 | E + F | 779 | 945 | 1.114 |
| 2226 | 2F | 800 | 970 | 1.147 |
| 2308 | E + G | 804 | 980 | 1.153 |
| 2390 | F + G | 824 | 1.004 | 1.186 |
| 2472 | F + H | 837 | 1.025 | 1.211 |
| 2554 | 2G | 846 | 1.035 | 1.223 |
| 2636 | G + H | 860 | 1.054 | 1.249 |
| 2718 | 2H | 877 | 1.076 | 1.276 |
| 2800 | H + I | 898 | 1.102 | 1.310 |
| 2882 | 2I | 916 | 1.129 | 1.340 |
| 2964 | H + J | 908 | 1.117 | 1.328 |
| 3046 | I + J | 927 | 1.143 | 1.360 |
| 3210 | 2J | 939 | 1.159 | 1.378 |
| 3325 | 2E + G | 1.137 | 1.394 | 1.648 |
| 3407 | E + F + G | 1.156 | 1.418 | 1.679 |
| 3489 | 2F + G | 1.175 | 1.443 | 1.710 |
| 3571 | E + 2G | 1.180 | 1.450 | 1.718 |
| 3653 | F + 2G | 1.200 | 1.476 | 1.751 |
| 3735 | F + G + H | 1.214 | 1.494 | 1.778 |
| 3817 | 3G | 1.222 | 1.507 | 1.790 |
| 3899 | 2G + H | 1.238 | 1.526 | 1.816 |
| 3981 | G + 2H | 1.251 | 1.548 | 1.841 |
| 4063 | 3H | 1.269 | 1.570 | 1.868 |
| 4145 | 2H + I | 1.288 | 1.594 | 1.900 |
| 4227 | H + 2I | 1.308 | 1.619 | 1.931 |
| 4309 | 3I | 1.327 | 1.646 | 1.965 |
| 4391 | H + I + J | 1.319 | 1.634 | 1.952 |
| 4473 | 2I + J | 1.337 | 1.661 | 1.984 |
| 4555 | H + 2J | 1.331 | 1.652 | 1.970 |
| 4637 | I + 2J | 1.349 | 1.678 | 2.003 |
| 4801 | 3J | 1.362 | 1.691 | 2.021 |
| 4916 | F + 3G | 1.574 | 1.945 | 2.316 |
| 4998 | F + 2G + H | 1.592 | 1.966 | 2.341 |
| 5080 | 4G | 1.598 | 1.976 | 2.354 |
| 5162 | 3G + H | 1.614 | 1.997 | 2.381 |
| 5244 | 2G + 2H | 1.630 | 2.019 | 2.408 |
| 5326 | G + 3H | 1.646 | 2.039 | 2.433 |
| 5408 | 4H | 1.661 | 2.059 | 2.458 |
| 5490 | 3H + I | 1.681 | 2.086 | 2.491 |
| 5572 | 2H + 2I | 1.699 | 2.113 | 2.524 |
| 5654 | 1H + 3I | 1.718 | 2.138 | 2.556 |

2 SOPORTES
3 SOPORTES
4 SOPORTES
5 SOPORTES

FONDO 370 MM

| Largo (mm) | Baldas | 3 niveles PVP (€) | 4 niveles PVP (€) | 5 niveles PVP (€) |
|------------|------------|-------------------|-------------------|-------------------|
| 689 | A | 307 | 383 | 459 |
| 771 | B | 322 | 403 | 482 |
| 853 | C | 338 | 424 | 509 |
| 935 | D | 350 | 440 | 529 |
| 1017 | E | 361 | 454 | 545 |
| 1099 | F | 376 | 473 | 572 |
| 1263 | G | 397 | 504 | 611 |
| 1345 | H | 413 | 527 | 635 |
| 1427 | I | 432 | 563 | 662 |
| 1591 | J | 444 | 547 | 683 |
| 1706 | 2C | 630 | 783 | 940 |
| 1788 | C + D | 640 | 800 | 958 |
| 1870 | 2D | 653 | 815 | 976 |
| 1952 | D + E | 661 | 828 | 994 |
| 2034 | 2E | 671 | 842 | 1.012 |
| 2116 | E + F | 689 | 863 | 1.038 |
| 2198 | 2F | 706 | 883 | 1.066 |
| 2280 | E + G | 714 | 894 | 1.076 |
| 2362 | F + G | 727 | 916 | 1.103 |
| 2444 | F + H | 743 | 936 | 1.129 |
| 2526 | 2G | 751 | 944 | 1.139 |
| 2608 | G + H | 766 | 966 | 1.166 |
| 2690 | 2H | 779 | 986 | 1.191 |
| 2772 | H + I | 797 | 1.009 | 1.220 |
| 2854 | 2I | 815 | 1.030 | 1.246 |
| 2936 | H + J | 809 | 1.024 | 1.238 |
| 3018 | I + J | 826 | 1.047 | 1.267 |
| 3182 | 2J | 837 | 1.062 | 1.287 |
| 3297 | 2E + G | 1.024 | 1.283 | 1.544 |
| 3379 | E + F + G | 1.040 | 1.304 | 1.570 |
| 3461 | 2F + G | 1.054 | 1.326 | 1.596 |
| 3543 | E + 2G | 1.063 | 1.333 | 1.606 |
| 3625 | F + 2G | 1.079 | 1.357 | 1.634 |
| 3707 | F + G + H | 1.094 | 1.376 | 1.659 |
| 3789 | 3G | 1.102 | 1.385 | 1.670 |
| 3871 | 2G + H | 1.117 | 1.407 | 1.697 |
| 3953 | G + 2H | 1.133 | 1.427 | 1.723 |
| 4035 | 3H | 1.148 | 1.448 | 1.747 |
| 4117 | 2H + I | 1.162 | 1.470 | 1.773 |
| 4199 | H + 2I | 1.180 | 1.490 | 1.801 |
| 4281 | 3I | 1.197 | 1.512 | 1.830 |
| 4363 | H + I + J | 1.193 | 1.508 | 1.822 |
| 4445 | 2I + J | 1.209 | 1.526 | 1.850 |
| 4527 | H + 2J | 1.204 | 1.522 | 1.841 |
| 4609 | I + 2J | 1.220 | 1.546 | 1.870 |
| 4773 | 3J | 1.232 | 1.561 | 1.889 |
| 4888 | F + 3G | 1.430 | 1.796 | 2.164 |
| 4970 | F + 2G + H | 1.447 | 1.818 | 2.187 |
| 5052 | 4G | 1.453 | 1.828 | 2.201 |
| 5134 | 3G + H | 1.468 | 1.846 | 2.228 |
| 5216 | 2G + 2H | 1.484 | 1.868 | 2.253 |
| 5298 | G + 3H | 1.499 | 1.888 | 2.277 |
| 5380 | 4H | 1.513 | 1.907 | 2.303 |
| 5462 | 3H + I | 1.530 | 1.931 | 2.331 |
| 5544 | 2H + 2I | 1.547 | 1.952 | 2.358 |
| 5626 | 1H + 3I | 1.564 | 1.975 | 2.386 |

1 SOPORTE

2 SOPORTES

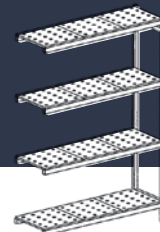
3 SOPORTES

4 SOPORTES

FONDO 570 MM

| Largo (mm) | Baldas | 3 niveles PVP (€) | 4 niveles PVP (€) | 5 niveles PVP (€) |
|------------|------------|-------------------|-------------------|-------------------|
| 689 | A | 338 | 421 | 503 |
| 771 | B | 356 | 445 | 532 |
| 853 | C | 374 | 467 | 561 |
| 935 | D | 385 | 481 | 579 |
| 1017 | E | 394 | 496 | 597 |
| 1099 | F | 413 | 522 | 630 |
| 1263 | G | 437 | 553 | 669 |
| 1345 | H | 454 | 572 | 693 |
| 1427 | I | 473 | 598 | 725 |
| 1591 | J | 484 | 616 | 745 |
| 1706 | 2C | 684 | 851 | 1.018 |
| 1788 | C + D | 696 | 867 | 1.036 |
| 1870 | 2D | 707 | 880 | 1.054 |
| 1952 | D + E | 718 | 898 | 1.075 |
| 2034 | 2E | 728 | 912 | 1.093 |
| 2116 | E + F | 747 | 936 | 1.124 |
| 2198 | 2F | 768 | 961 | 1.155 |
| 2280 | E + G | 770 | 967 | 1.162 |
| 2362 | F + G | 790 | 993 | 1.195 |
| 2444 | F + H | 806 | 1.013 | 1.220 |
| 2526 | 2G | 815 | 1.024 | 1.233 |
| 2608 | G + H | 829 | 1.044 | 1.261 |
| 2690 | 2H | 845 | 1.066 | 1.286 |
| 2772 | H + I | 863 | 1.092 | 1.317 |
| 2854 | 2I | 882 | 1.117 | 1.349 |
| 2936 | H + J | 876 | 1.106 | 1.337 |
| 3018 | I + J | 896 | 1.133 | 1.371 |
| 3182 | 2J | 908 | 1.148 | 1.387 |
| 3297 | 2E + G | 1.106 | 1.382 | 1.657 |
| 3379 | E + F + G | 1.124 | 1.407 | 1.688 |
| 3461 | 2F + G | 1.143 | 1.431 | 1.720 |
| 3543 | E + 2G | 1.148 | 1.438 | 1.729 |
| 3625 | F + 2G | 1.166 | 1.463 | 1.760 |
| 3707 | F + G + H | 1.184 | 1.484 | 1.786 |
| 3789 | 3G | 1.189 | 1.494 | 1.798 |
| 3871 | 2G + H | 1.205 | 1.515 | 1.823 |
| 3953 | G + 2H | 1.222 | 1.535 | 1.852 |
| 4035 | 3H | 1.238 | 1.558 | 1.877 |
| 4117 | 2H + I | 1.256 | 1.582 | 1.907 |
| 4199 | H + 2I | 1.274 | 1.607 | 1.940 |
| 4281 | 3I | 1.295 | 1.634 | 1.972 |
| 4363 | H + I + J | 1.288 | 1.623 | 1.960 |
| 4445 | 2I + J | 1.308 | 1.650 | 1.992 |
| 4527 | H + 2J | 1.299 | 1.642 | 1.980 |
| 4609 | I + 2J | 1.319 | 1.665 | 2.012 |
| 4773 | 3J | 1.328 | 1.681 | 2.032 |
| 4888 | F + 3G | 1.544 | 1.933 | 2.325 |
| 4970 | F + 2G + H | 1.560 | 1.954 | 2.352 |
| 5052 | 4G | 1.569 | 1.966 | 2.363 |
| 5134 | 3G + H | 1.582 | 1.987 | 2.390 |
| 5216 | 2G + 2H | 1.598 | 2.008 | 2.417 |
| 5298 | G + 3H | 1.614 | 2.029 | 2.443 |
| 5380 | 4H | 1.628 | 2.048 | 2.467 |
| 5462 | 3H + I | 1.648 | 2.075 | 2.500 |
| 5544 | 2H + 2I | 1.669 | 2.101 | 2.533 |
| 5626 | 1H + 3I | 1.687 | 2.125 | 2.564 |





FONDO 370 MM

| Largo (mm) | Baldas | 3 niveles PVP (€) | 4 niveles PVP (€) | 5 niveles PVP (€) |
|------------|------------|-------------------|-------------------|-------------------|
| 689 | A | 343 | 418 | 494 |
| 771 | B | 356 | 437 | 518 |
| 853 | C | 374 | 459 | 545 |
| 935 | D | 385 | 473 | 562 |
| 1017 | E | 394 | 487 | 581 |
| 1099 | F | 410 | 508 | 608 |
| 1263 | G | 435 | 541 | 644 |
| 1345 | H | 449 | 559 | 671 |
| 1427 | I | 466 | 581 | 697 |
| 1591 | J | 477 | 597 | 718 |
| 1706 | 2C | 700 | 854 | 1.009 |
| 1788 | C + D | 709 | 869 | 1.026 |
| 1870 | 2D | 720 | 881 | 1.044 |
| 1952 | D + E | 732 | 898 | 1.063 |
| 2034 | 2E | 742 | 912 | 1.080 |
| 2116 | E + F | 759 | 932 | 1.108 |
| 2198 | 2F | 772 | 954 | 1.134 |
| 2280 | E + G | 779 | 963 | 1.146 |
| 2362 | F + G | 797 | 986 | 1.174 |
| 2444 | F + H | 814 | 1.004 | 1.197 |
| 2526 | 2G | 820 | 1.015 | 1.210 |
| 2608 | G + H | 833 | 1.035 | 1.234 |
| 2690 | 2H | 851 | 1.054 | 1.263 |
| 2772 | H + I | 865 | 1.076 | 1.288 |
| 2854 | 2I | 881 | 1.099 | 1.315 |
| 2936 | H + J | 878 | 1.094 | 1.308 |
| 3018 | I + J | 896 | 1.114 | 1.335 |
| 3182 | 2J | 905 | 1.130 | 1.355 |
| 3297 | 2E + G | 1.128 | 1.385 | 1.645 |
| 3379 | E + F + G | 1.143 | 1.408 | 1.673 |
| 3461 | 2F + G | 1.159 | 1.427 | 1.699 |
| 3543 | E + 2G | 1.166 | 1.436 | 1.709 |
| 3625 | F + 2G | 1.184 | 1.461 | 1.736 |
| 3707 | F + G + H | 1.197 | 1.481 | 1.762 |
| 3789 | 3G | 1.205 | 1.489 | 1.773 |
| 3871 | 2G + H | 1.220 | 1.510 | 1.798 |
| 3953 | G + 2H | 1.237 | 1.531 | 1.823 |
| 4035 | 3H | 1.250 | 1.551 | 1.852 |
| 4117 | 2H + I | 1.267 | 1.573 | 1.877 |
| 4199 | H + 2I | 1.285 | 1.594 | 1.904 |
| 4281 | 3I | 1.300 | 1.616 | 1.931 |
| 4363 | H + I + J | 1.296 | 1.610 | 1.926 |
| 4445 | 2I + J | 1.312 | 1.633 | 1.953 |
| 4527 | H + 2J | 1.308 | 1.625 | 1.945 |
| 4609 | I + 2J | 1.324 | 1.648 | 1.972 |
| 4773 | 3J | 1.335 | 1.663 | 1.992 |
| 4888 | F + 3G | 1.569 | 1.935 | 2.302 |
| 4970 | F + 2G + H | 1.582 | 1.954 | 2.326 |
| 5052 | 4G | 1.592 | 1.965 | 2.339 |
| 5134 | 3G + H | 1.606 | 1.985 | 2.363 |
| 5216 | 2G + 2H | 1.621 | 2.006 | 2.390 |
| 5298 | G + 3H | 1.636 | 2.028 | 2.417 |
| 5380 | 4H | 1.652 | 2.047 | 2.442 |
| 5462 | 3H + I | 1.669 | 2.068 | 2.467 |
| 5544 | 2H + 2I | 1.684 | 2.091 | 2.497 |
| 5626 | 1H + 3I | 1.702 | 2.113 | 2.523 |

1 SOPORTE

2 SOPORTES

3 SOPORTES

4 SOPORTES

FONDO 570 MM

| Largo (mm) | Baldas | 3 niveles PVP (€) | 4 niveles PVP (€) | 5 niveles PVP (€) |
|------------|------------|-------------------|-------------------|-------------------|
| 689 | A | 376 | 459 | 543 |
| 771 | B | 392 | 481 | 570 |
| 853 | C | 410 | 504 | 598 |
| 935 | D | 421 | 520 | 617 |
| 1017 | E | 433 | 534 | 635 |
| 1099 | F | 453 | 559 | 666 |
| 1263 | G | 475 | 590 | 706 |
| 1345 | H | 491 | 611 | 732 |
| 1427 | I | 509 | 635 | 764 |
| 1591 | J | 522 | 653 | 782 |
| 1706 | 2C | 760 | 927 | 1.094 |
| 1788 | C + D | 770 | 941 | 1.112 |
| 1870 | 2D | 781 | 957 | 1.130 |
| 1952 | D + E | 793 | 968 | 1.148 |
| 2034 | 2E | 805 | 986 | 1.166 |
| 2116 | E + F | 824 | 1.012 | 1.200 |
| 2198 | 2F | 842 | 1.036 | 1.229 |
| 2280 | E + G | 846 | 1.042 | 1.238 |
| 2362 | F + G | 865 | 1.067 | 1.270 |
| 2444 | F + H | 880 | 1.089 | 1.295 |
| 2526 | 2G | 890 | 1.099 | 1.310 |
| 2608 | G + H | 905 | 1.121 | 1.333 |
| 2690 | 2H | 919 | 1.139 | 1.360 |
| 2772 | H + I | 940 | 1.166 | 1.394 |
| 2854 | 2I | 959 | 1.191 | 1.425 |
| 2936 | H + J | 952 | 1.183 | 1.412 |
| 3018 | I + J | 968 | 1.207 | 1.444 |
| 3182 | 2J | 982 | 1.222 | 1.463 |
| 3297 | 2E + G | 1.218 | 1.494 | 1.769 |
| 3379 | E + F + G | 1.238 | 1.519 | 1.801 |
| 3461 | 2F + G | 1.255 | 1.546 | 1.834 |
| 3543 | E + 2G | 1.263 | 1.551 | 1.841 |
| 3625 | F + 2G | 1.279 | 1.575 | 1.872 |
| 3707 | F + G + H | 1.295 | 1.597 | 1.898 |
| 3789 | 3G | 1.303 | 1.606 | 1.911 |
| 3871 | 2G + H | 1.319 | 1.625 | 1.939 |
| 3953 | G + 2H | 1.333 | 1.648 | 1.963 |
| 4035 | 3H | 1.349 | 1.670 | 1.989 |
| 4117 | 2H + I | 1.371 | 1.696 | 2.021 |
| 4199 | H + 2I | 1.387 | 1.720 | 2.055 |
| 4281 | 3I | 1.408 | 1.746 | 2.086 |
| 4363 | H + I + J | 1.400 | 1.736 | 2.074 |
| 4445 | 2I + J | 1.420 | 1.762 | 2.105 |
| 4527 | H + 2J | 1.412 | 1.753 | 2.093 |
| 4609 | I + 2J | 1.430 | 1.778 | 2.125 |
| 4773 | 3J | 1.443 | 1.794 | 2.143 |
| 4888 | F + 3G | 1.692 | 2.084 | 2.475 |
| 4970 | F + 2G + H | 1.708 | 2.105 | 2.501 |
| 5052 | 4G | 1.715 | 2.116 | 2.514 |
| 5134 | 3G + H | 1.733 | 2.138 | 2.539 |
| 5216 | 2G + 2H | 1.747 | 2.156 | 2.566 |
| 5298 | G + 3H | 1.764 | 2.178 | 2.593 |
| 5380 | 4H | 1.780 | 2.201 | 2.619 |
| 5462 | 3H + I | 1.796 | 2.226 | 2.650 |
| 5544 | 2H + 2I | 1.818 | 2.250 | 2.683 |
| 5626 | 1H + 3I | 1.839 | 2.276 | 2.714 |



24/48 HORAS EXPEDICIÓN